



TH	THAILAND
----	----------

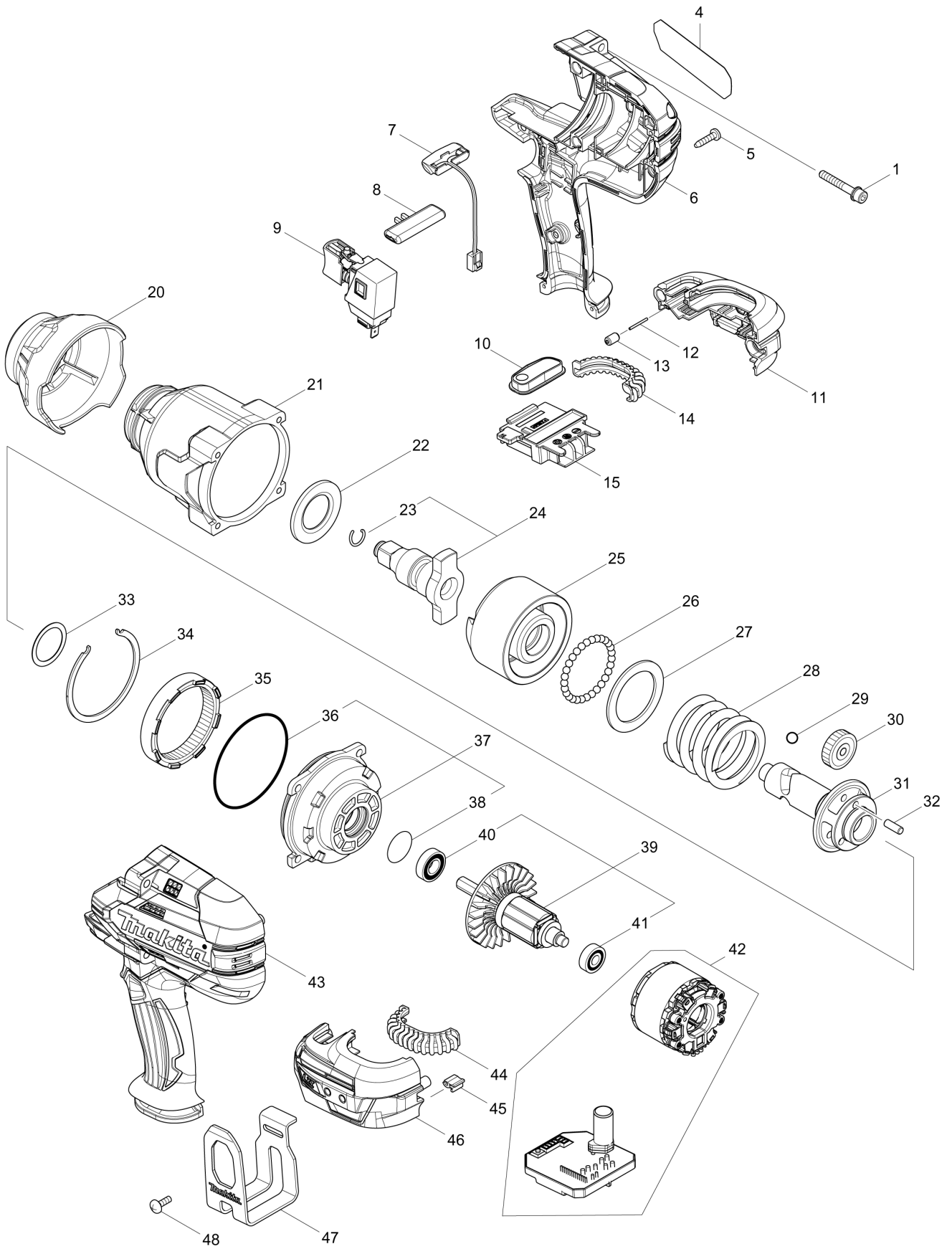
# Diagram / Parts List

**DTW1002**

**CORDLESS IMPACT WRENCH**



(TH) DTW1002 / CORDLESS IMPACT WRENCH



<b>TH</b>	<b>THAILAND</b>
-----------	-----------------

**DTW1002 / CORDLESS IMPACT WRENCH**

Item	Sub	Parts No.	Parts Description	Qty	I/C	E/C No.	Close No.	Remark
001		251476-6	H.S.H.BOLT M5X35 WITH WR	4				
004		851K57-8	DTW1002 NAME PLATE	1			D3199	
004-1		857K86-9	DTW1002 NAME PLATE	1	S	D3199		
005		266326-2	TAPPING SCREW 4X18	9				
006		183C08-8	HOUSING SET	1			B9714	
	D10		INC. 43				B9714	
006-1		183H36-3	HOUSING SET	1	O	B9714		
	D10		INC. 43			B9714		
007		620351-1	LED CIRCUIT	1				
008		456268-0	F/R CHANGE LEVER	1				
009		143416-7	SWITCH COMPLETE	1				
010		143417-5	SWITCH PLATE COMPLETE	1				
011		183C12-7	BATTERY HOUSING SET	1				
	C10	263005-3	RUBBER PIN 6	2				
	D10		INC. 46					
012		268284-8	PIN 1.5	1				
013		263036-2	RUBBER PIN 5	1				
014		424773-5	CUSHION RUBBER	1				
015		643899-6	TERMINAL	1				
020		424775-1	BUMPER	1			B6398	
020-1		424978-7	BUMPER	1	<	B6398		
021		143411-7	HAMMER CASE COMPLETE	1			B6398	
021-1		144473-8	HAMMER CASE COMPLETE	1	S	B6398		
022		346948-5	WASHER 25	1				
023		231907-1	RING SPRING 10	1			B2926	
023-1		232323-0	RING SPRING 10	1	<	B2926		
024		135717-7	ANVIL W ASS'Y	1			B2926	
	D10		INC. 23				B2926	
024-1		135717-7	ANVIL W ASS'Y	1	<	B2926	B3909	
	D10		INC. 23			B2926	B3909	
024-2		135804-2	ANVIL W ASS'Y	1	<	B3909		
	D10		INC. 23			B3909		
025		326613-2	HAMMER	1				
026		216002-8	STEEL BALL 4.8	29				
027		267493-6	FLAT WASHER 38	1				
028		234383-8	COMPRESSION SPRING 38	1				
029		216009-4	STEEL BALL 7.1	2				
030		227391-6	SPUR GEAR 24	3			C6016	
030-1		226879-3	SPUR GEAR 24	3	<	C6016	C6017	
030-2		226880-8	SPUR GEAR 24	3	O	C6017		
031		326611-6	SPINDLE	1				
032		268079-9	PIN 5	3				
033		267494-4	FLAT WASHER 25	1			D3627	
033-1		267127-1	FLAT WASHER 26	1	O	D3627		
034		346947-7	RETAINER	1				
035		227392-4	INTERNAL SPUR GEAR 54	1				
036		213720-9	O RING 67	1				
037		135718-5	INTERNAL GEAR CASE ASS'Y	1				
	D10		INC. 36,38					
038		213961-7	O RING 22	1				
039		519384-0	ROTOR ASS'Y	1			C9384	
	D10		INC. 40,41				C9384	
039-1		519593-1	ROTOR ASS'Y	1	O	C9384		
	D10		INC. 40,41			C9384		
040		210069-8	BALL BEARING 6900DDW	1				
041		211022-7	BALL BEARING 607ZZ	1				
042		629170-2	STATOR COMPLETE	1			B8967	
042-1		629330-6	STATOR COMPLETE	1	<	B8967	DE552	
042-2		629B59-6	STATOR	1	S	DE552		
043		183C08-8	HOUSING SET	1			B9714	
	D10		INC. 6				B9714	
043-1		183H36-3	HOUSING SET	1	O	B9714		
	D10		INC. 6			B9714		
044		424773-5	CUSHION RUBBER	1				
045		424517-3	CUSHION	1				

B:DTW1002RMJ(H)  
C:DTW1002RFJ(H)  
D:DTW1002RTJ(H)

Interchange  
O : Yes  
X : No  
< : the new part can be substituted for the current.  
> : the current part can be substituted for the new.  
S : Interchangeable as a set.

