



Cordless Lawn Mower

LM001J 480 mm (18-7/8")

LM002J 530 mm (21")

Powered by 64Vmax Li-Ion battery



photo: LM002J

LM001J
Mowing area
1,400 m²

LM002J
Mowing area
1,600 m²

LM001J
480 mm (18-7/8")

LM002J
530 mm (21")



photo: LM001J

BL6440

Powerful battery optimized for the Makita battery powered lawn mower



64V Li-ion max

BL MOTOR XPT

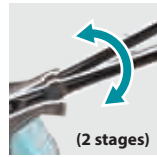


Powered by 64Vmax Li-ion battery



Collecting	Mulching	Rear discharge	Side discharge
✓	✓	✓	—

Handle height adjustment



(2 stages)

Control panel

3 cutting modes

- (No load speed)
- Normal mode
LM001J: 3,200
LM002J: 2,800
 - Soft no-load mode
LM001J: 2,500 / 3,200
LM002J: 2,300 / 2,800
 - Noise reduction mode
LM001J: 2,500
LM002J: 2,300



Main switch

Grass level indicator



Tool-less foldable handle



Can be stored vertically



Plastics Deck

Cutting width
LM001J: **480mm**
LM002J: **534mm**

10 cutting height settings
from 20mm to 100mm

Higher mowing performance



The blade is designed so that it tilts towards the front side of the mower when attached, preventing double-cutting for reduced current consumption.



Optimum blade design for less rotational speed reduction of the blade

BL MOTOR



XPT



IPX4-rated water-resistance

Battery & Charger

BL6440 (4.0Ah)

Battery fuel gauge



Assist handle

- assists easy installation/removal of the battery from the lawn mower or battery charger.
- allows for easy transportation of the battery to job site.

DC64WA



Charging Time

64Vmax

BL6440 4.0Ah

DC64WA



120 min

Accessories

Blade



Model: LM001J
Size: 480mm
Part No. 191V97-3

Model: LM002J
Size: 530mm
Part No. 191V96-5



Cordless Lawn Mower

LM001J 480 mm (18-7/8") / LM002J 530 mm (21")

	LM001J	LM002J
Brake	480 mm (18-7/8")	534 mm (21")
Electronic 2-Speed	20 - 100 mm (13/16 - 3-15/16")	20 - 100 mm (13/16 - 3-15/16")
Constant Speed	62 L	70 L
Cutting Width	2,500 - 3,200	2,300 - 2,800
Cutting Height	1,400 m ²	1,600 m ²
Grass Box Capacity	34	39
No Load Speed (RPM)	84.9 dB(A)	82.1 dB(A)
Actual Mowing Area	92.5 dB(A)	91.6 dB(A)
Continuous Use (min.)	2.5 m/s ² or less	2.5 m/s ² or less
Sound Pressure Level	1,600 - 1,680 x 540 x 955 - 1,080 mm	1,710 - 1,800 x 585 x 985 - 1,115 mm
Sound Power Level	(63 - 66 x 21-1/4 x 37-1/2 - 42-1/2")	(67-1/2 - 71 x 23 x 38-3/4 - 44")
Vibration Level	24.4 - 26.1 kg (53.8 - 57.5 lbs.)	25.7 - 27.6 kg (56.7 - 60.8 lbs.)
Dimensions (L x W x H)		
Net weight		

Standard Equipment : Blade, Mulching Plug, Box Wrench, Rod

The weight may differ depending on the attachment(s), including the battery cartridge. The lightest and heaviest combination, according to EPTA-Procedure 01/2014, are shown in the table. Items of standard equipment and specifications may vary by country or area.

Makita Corporation

3-11-8 Sumiyoshi-cho, Anjo, Aichi, 446-8502 Japan

PRINTED IN JAPAN 202110