



TH	THAILAND
----	----------

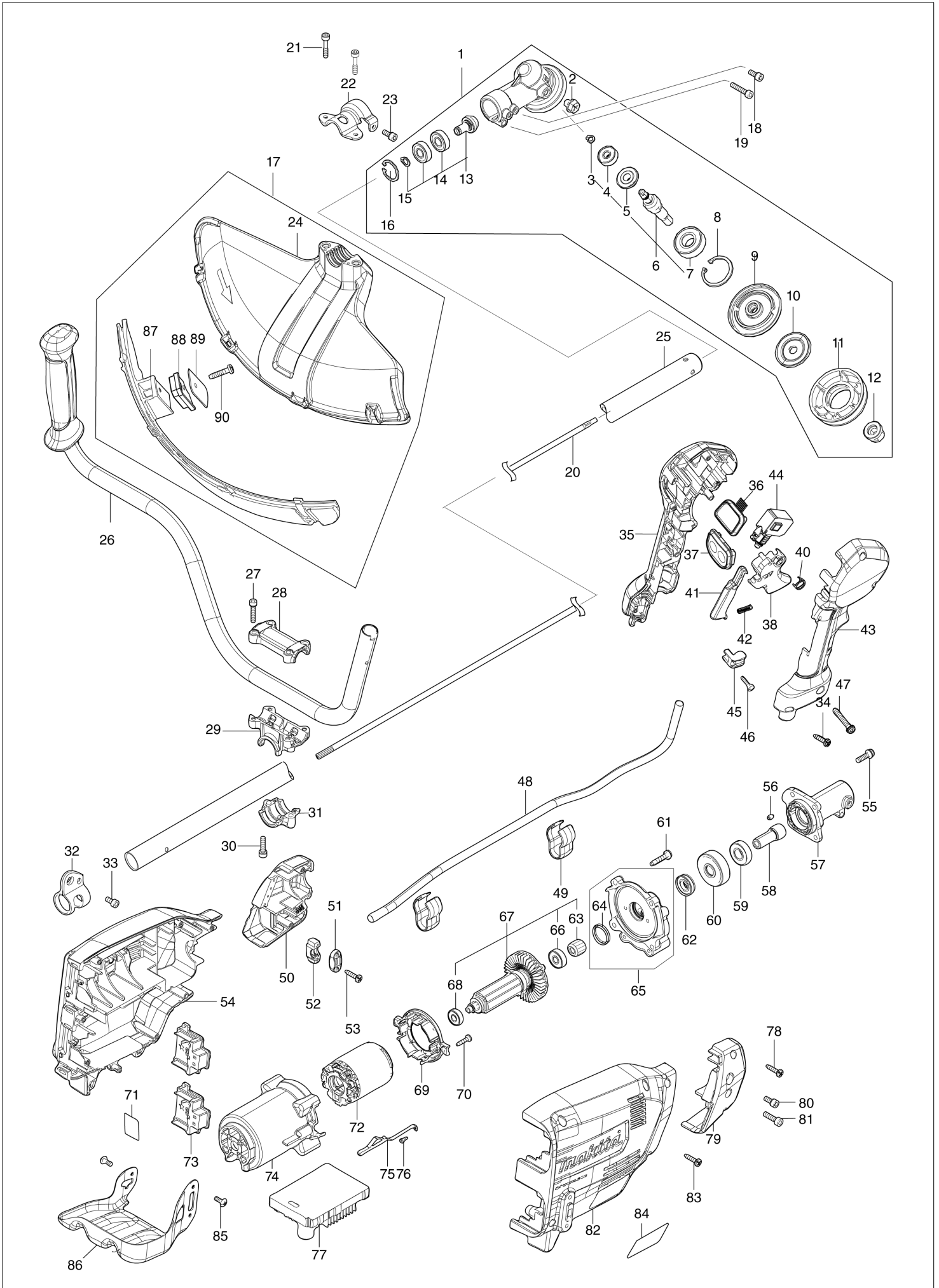
Diagram / Parts List

DUR369A

CORDLESS GRASS TRIMMER



(TH) DUR369A / CORDLESS GRASS TRIMMER



TH	THAILAND
----	----------

DUR369A / CORDLESS GRASS TRIMMER

Item	Sub	Parts No.	Parts Description	Qty	I/C	E/C No.	Close No.	Remark
001		123853-1	GEAR CASE ASSEMBLY	1				
	D10		INC. 2-16					
002		265590-2	+HEX.BOLT M8X10 WITH R	1				
003		232350-7	RING SPRING 6	1				
004		210030-5	BALL BEARING 627ZZ	1				
005		221484-1	SPIRAL BEVEL GEAR 19	1				
006		136233-2	CUTTER SHAFT ASS'Y	1				
	D10		INC. 3-5,7					
007		211228-7	BALL BEARING 6202DDW	1				
008		257432-4	RETAINING RING R-35	1				
009		144312-2	RECEIVE WASHER COMPLETE	1				
010		347104-0	CLAMP WASHER	1				
011		457274-8	CUP US	1				
012		252236-9	HEX. LOCK NUT M10-17	1				
013		136235-8	SPIRAL BEVEL GEAR ASS'Y	1				
	D10		INC. 14,15					
014		210049-4	BALL BEARING 609ZZ	2				
015		257986-1	RETAINING RING (EXT) S-9	1				
016		257987-9	RETAINING RING (INT)R-24	1				
017		191B54-1	PROTECTOR U 430 SET MG	1				
	D10		INC. 24,87-90					
018		922216-6	H.S.H.BOLT M5X14 WITH W	1				
019		922242-5	HEX. SOCKET HEAD BOLT M5X25	1				
020		327056-1	SHAFT	1				
021		251513-6	H.S.H.BOLT M5X25	2				
022		347107-4	PROTECTOR CLAMP 24	1				
023		922216-6	H.S.H.BOLT M5X14 WITH W	1				
024		457271-4	PROTECTOR U 450	1				
025		140M97-6	SHAFT PIPE COMPLETE A	1				
	C10	819312-8	MAKITA LOGO LABEL	1				
	C20	819N87-3	CAUTION LABEL	1				
026		140L83-1	HANDLE 19 COMPLETE	1				
027		922241-7	HEX. SOCKET HEAD BOLT M5X25	4				
028		318272-6	HANDLE HOLDER 1	1				
029		319705-4	HANDLE HOLDER	1				
030		922241-7	HEX. SOCKET HEAD BOLT M5X25	2				
031		319703-8	PIPE CLAMP	1				
032		347116-3	HANGER	1				
033		922212-4	HEX. SOCKET HEAD BOLT M5X12	1				
034		266326-2	TAPPING SCREW 4X18	5				
035		183L61-8	GRIP SET	1				
	C10	252180-0	HEX. LOCK NUT M5-8	1				
	D10		INC. 43					
036		140K36-4	INDICATION CIRCUIT COMPLETE G	1				
037		140K35-6	SWITCH CIRCUIT COMPLETE G	1				
	C10	819J26-9	SWITCH LABEL	1				
038		459145-5	SWITCH LEVER	1				
040		233540-5	TORSION SPRING 11	1				
041		459146-3	LOCK OFF LEVER	1				
042		233101-1	COMPRESSION SPRING 4	1				
043		183L61-8	GRIP SET	1				
	C10	252180-0	HEX. LOCK NUT M5-8	1				
	D10		INC. 35					
044		651436-2	SWITCH C3JW-1A-P-2	1				
045		687260-7	STRAIN RELIEF	1				
046		266326-2	TAPPING SCREW 4X18	1				
047		911258-5	PAN HEAD SCREW M5X35	1				
048		699132-4	POWER SUPPLY CORD UNIT	1				
049		457458-8	CLAMP	2				
050		183N25-4	HOUSING COVER SET	1				
	D10		INC. 79					
051		687124-5	STRAIN RELIEF	1				
052		687051-6	STRAIN RELIEF	1				
053		266326-2	TAPPING SCREW 4X18	2				
054		183N23-8	HOUSING SET	1				

A:DUR369AZ(N)

Interchange
 O : Yes
 X : No
 < : the new part can be substituted for the current.
 > : the current part can be substituted for the new.
 S : Interchangeable as a set.

TH	THAILAND
----	----------

DUR369A / CORDLESS GRASS TRIMMER

Item	Sub	Parts No.	Parts Description	Qty	I/C	E/C No.	Close No.	Remark
	C10	263005-3	RUBBER PIN 6	4				
	C20	252126-6	HEX. LOCK NUT M4-7	3				
	D10		INC. 82					
055		911233-1	PAN HEAD SCREW M5X20	4				
056		263002-9	RUBBER PIN 4	1				
057		319919-5	PIPE BRACKET	1				
058		325811-5	SPINDLE HUB	1				
059		211131-2	BALL BEARING 6001DDW	1				
060		226931-7	HELICAL GEAR 29	1				
061		266459-3	TAPPING SCREW 5X25	4				
062		211150-8	BALL BEARING 6901ZZ	1				
063		226932-5	HELICAL GEAR 10	1				
064		213961-7	O RING 22	1				
065		136231-6	GEAR BOX ASS'Y	1				
	D10		INC. 64					
066		210005-4	BALL BEARING 608DDW	1				
067		519587-6	ROTOR ASS'Y	1				
	D10		INC. 63,66,68					
068		210062-2	BALL BEARING 607ZZ	1				
069		459764-7	BAFFLE PLATE	1				
070		266326-2	TAPPING SCREW 4X18	2				
071		856H96-5	DUR369A SERIAL NO. LABEL	1				
072		629443-3	STATOR	1			DL079	
072-1		629471-8	STATOR	1	O	DL079		
073		644809-6	TERMINAL	2				
074		459763-9	MOTOR HOUSING	1				
077		620C05-8	CONTROLLER	1				
078		266326-2	TAPPING SCREW 4X18	2				
079		183N25-4	HOUSING COVER SET	1				
	D10		INC. 50					
080		922211-6	H.S.H.BOLT M5X12 WITH W	1			DE101	
080-1		922216-6	H.S.H.BOLT M5X14 WITH W	1	O	DE101		
081		922233-6	H.S.H.BOLT M5X20 WITH WR	1				
082		183N23-8	HOUSING SET	1				
	C10	263005-3	RUBBER PIN 6	4				
	C20	252126-6	HEX. LOCK NUT M4-7	3				
	D10		INC. 54					
083		266326-2	TAPPING SCREW 4X18	7				
084		856H88-4	DUR369A NAME PLATE	1				
085		251314-2	+ SCREW M4X12	3				
086		347563-8	BATTERY GUARD	1				
087		144316-4	PROTECTOR U EXT. 420-450 COMP	1				
	C10	346696-6	HOOK	2		Y08677		
	C20	232284-4	LEAF SPRING	2		Y08677		
088		459765-5	CUTTER EXTENSION	1				
089		347115-5	CUTTER	1				
090		266459-3	TAPPING SCREW 5X25	1				
A01		122906-3	BAND ASSY	1				
A04		144392-8	TOOL COVER 2T	1				
A05		198345-9	CUTTER BLADE 255-2 SET ME	1				
A06		782238-6	BOX WRENCH 17	1				
A07		783202-0	HEX. WRENCH 4	1				
A08		831304-7	ACCESSORY BAG	1				
A09		195246-2	SAFETY GOGGLE	1			DJ640	
F17		197472-9	NYLON CORD 2.0-15M SET	1				
F18		197473-7	NYLON CORD 2.0-30M SET	1				
F19		197474-5	NYLON CORD 2.0-160M SET	1				
F20		197475-3	NYLON CORD 2.0-280M SET	1				
F26		199868-0	PLASTIC BLADE 305 SET MG	1				
F27		199870-3	PLASTIC BLADE 305 BLADE SET MG	1				
F28		198266-5	TRIMMER HEAD 110-M10L SET ME	1				
F34		198502-9	NYLON CORD 2.4-30M SET	1				
F35		198503-7	NYLON CORD 2.4-120M SET	1				
F36		198504-5	NYLON CORD 2.4-180M SET	1				
F40-1		199450-5	GREASE VESSEL SET	1	O	D1218		

A:DUR369AZ(N)

Interchange
O : Yes
X : No
< : the new part can be substituted for the current.
> : the current part can be substituted for the new.
S : Interchangeable as a set.