



TH	THAILAND
----	----------

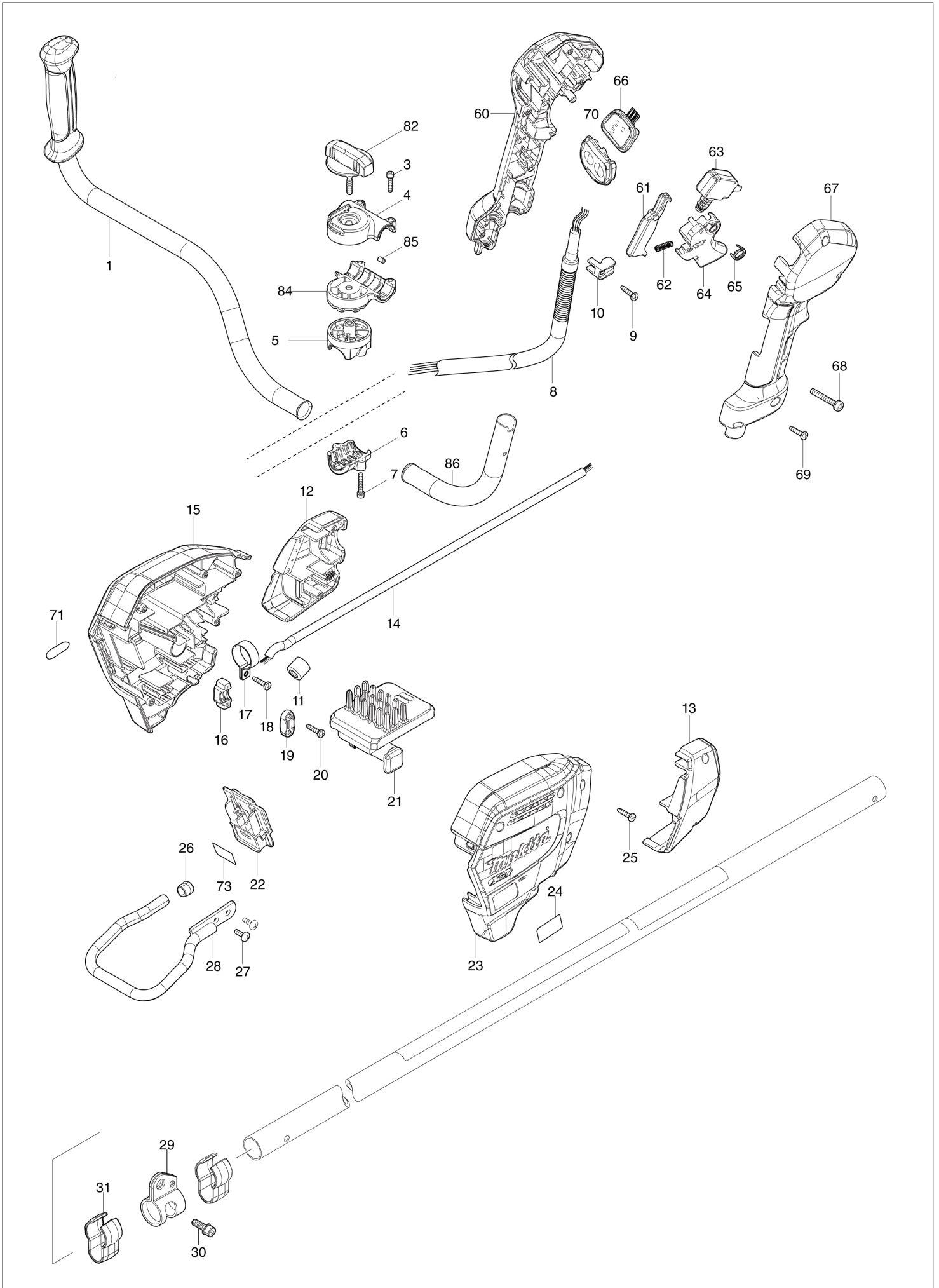
# Diagram / Parts List

**UR002G**

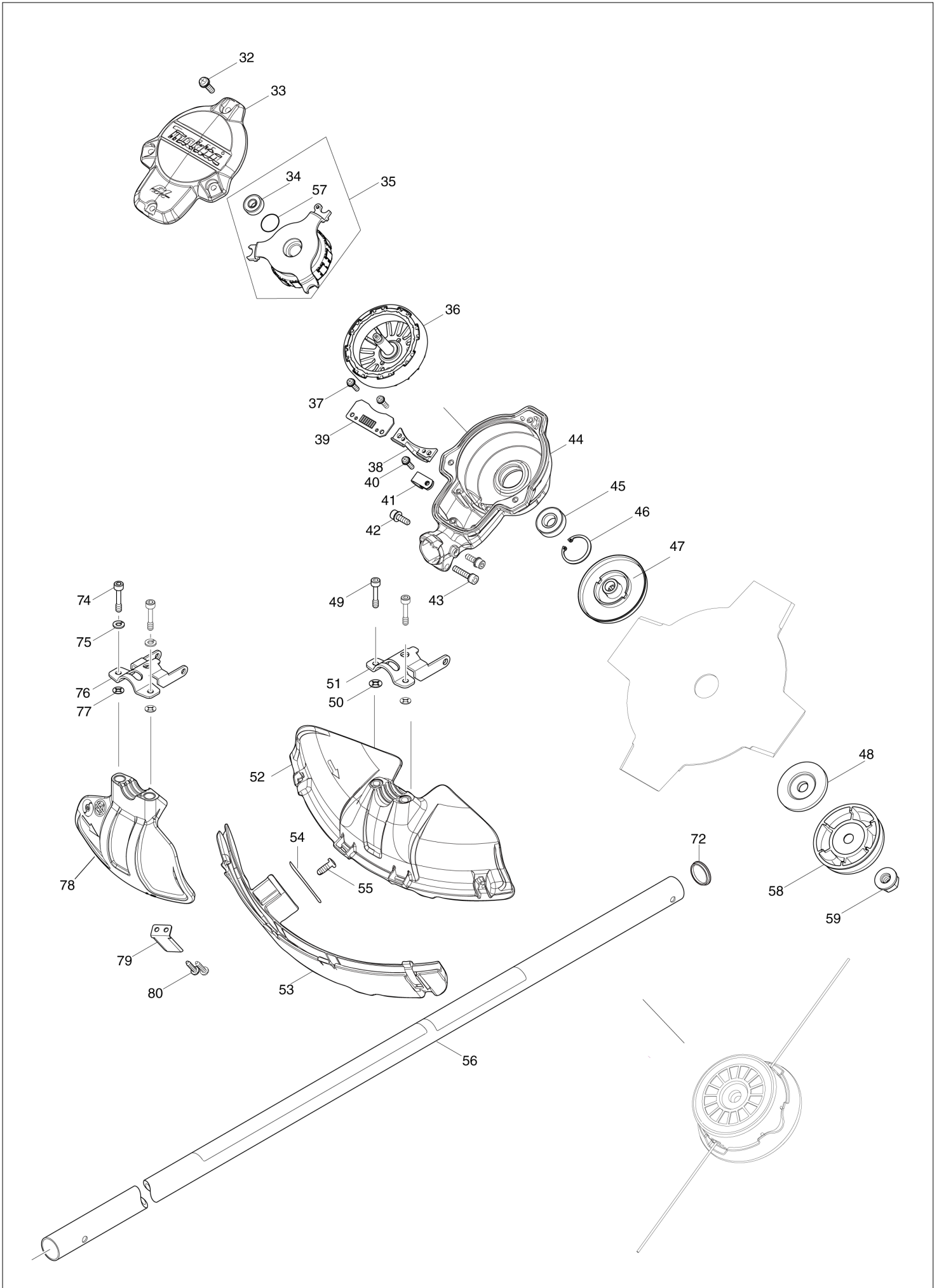
**CORDLESS GRASS TRIMMER**



(TH) UR002G / CORDLESS GRASS TRIMMER



(TH) UR002G / CORDLESS GRASS TRIMMER



TH	THAILAND
----	----------

### UR002G / CORDLESS GRASS TRIMMER

Item	Sub	Parts No.	Parts Description	Qty	I/C	E/C No.	Close No.	Remark
001		140L83-1	HANDLE 19 COMPLETE	1			D8990	
001-1		141E67-0	HANDLE 19 L COMPLETE	1	<	D8990		
003		922241-7	HEX. SOCKET HEAD BOLT M5X25	4			D8990	
003-1		922241-7	HEX. SOCKET HEAD BOLT M5X25	2	<	D8990		
004		318272-6	HANDLE HOLDER 1	1			D8990	
004-1		141D69-0	UPPER HANDLE HOLDER19 COMPLET	1	<	D8990		
005		318273-4	HANDLE HOLDER 2	1			D8990	
005-1		312B65-5	UPPER PIPE HOLDER 24	1	<	D8990		
006		318274-2	HANDLE HOLDER 3	1			D8990	
006-1		312B66-3	LOWER PIPE HOLDER 24	1	<	D8990		
007		922241-7	HEX. SOCKET HEAD BOLT M5X25	2			D8990	
007-1		922251-4	HEX. SOCKET HEAD BOLT M5X30	2	<	D8990		
008		699132-4	POWER SUPPLY CORD UNIT	1				
009		266326-2	TAPPING SCREW 4X18	1				
010		687260-7	STRAIN RELIEF	1				
012		183S35-1	HOUSING COVER SET	1				
	D10		INC. 13					
013		183S35-1	HOUSING COVER SET	1				
	D10		INC. 12					
014		699159-4	POWER SUPPLY CORD UNIT	1				
015		183S34-3	HOUSING SET	1				
	C10	263005-3	RUBBER PIN 6	2				
	D10		INC. 23					
016		687051-6	STRAIN RELIEF	1				
017		346248-3	CLAMP 24	1				
018		266326-2	TAPPING SCREW 4X18	1				
019		687124-5	STRAIN RELIEF	1				
020		266326-2	TAPPING SCREW 4X18	2				
021		620E46-6	CONTROLLER	1			DC879	
021-1		620J65-2	CONTROLLER	1	S	DC879		
022		632P49-4	TERMINAL UNIT	1				
023		183S34-3	HOUSING SET	1				
	C10	263005-3	RUBBER PIN 6	2				
	D10		INC. 15					
024		811A45-7	UR002G NAME PLATE	1				
025		266326-2	TAPPING SCREW 4X18	7				
026		422230-7	CAP	1				
027		266420-0	TAPPING SCREW 5X20	2				
028		347752-5	BATTERY GUARD	1				
029		347116-3	HANGER	1				
030		922212-4	HEX. SOCKET HEAD BOLT M5X12	1				
031		457458-8	CLAMP	2				
032		911233-1	PAN HEAD SCREW M5X20	4				
033		413335-4	TOP COVER	1				
034		210062-2	BALL BEARING 607ZZ	1				
035		529146-8	STATOR ASS'Y	1			DC879	
	D10		INC. 34,57				DC879	
035-1		520136-4	STATOR ASS'Y	1	S	DC879		
	D10		INC. 34,57			DC879		
036		619462-7	ROTOR	1				
037		911128-8	P.H.SCREW M4X16 WITH WR	2				
038		455628-3	INNER COVER	1				
039		620E48-2	CONTROLLER B	1				
040		911128-8	P.H.SCREW M4X16 WITH WR	1				
041		687042-7	STRAIN RELIEF	1				
042		922223-9	H.S.H.BOLT M5X16 WITH WR	2				
043		922241-7	HEX. SOCKET HEAD BOLT M5X25	1				
044		141A05-8	MOTOR HOUSING COMPLETE	1				
045		211131-2	BALL BEARING 6001DDW	1				
046		962106-1	RETAINING RING R-28	1				
047		140L84-9	RECEIVE WASHER COMPLETE G	1				
048		346084-7	CLAMP WASHER	1				
049		266896-1	HEX. SOCKET HEAD BOLT M5X20	2				
050		261156-6	POLYPROPYLENE WASHER 4	2				
051		346785-7	PROTECTOR CLAMP	1				

A:UR002GZ02(N)

Interchange  
 O : Yes  
 X : No  
 < : the new part can be substituted for the current.  
 > : the current part can be substituted for the new.  
 S : Interchangeable as a set.

