



TH	THAILAND
----	----------

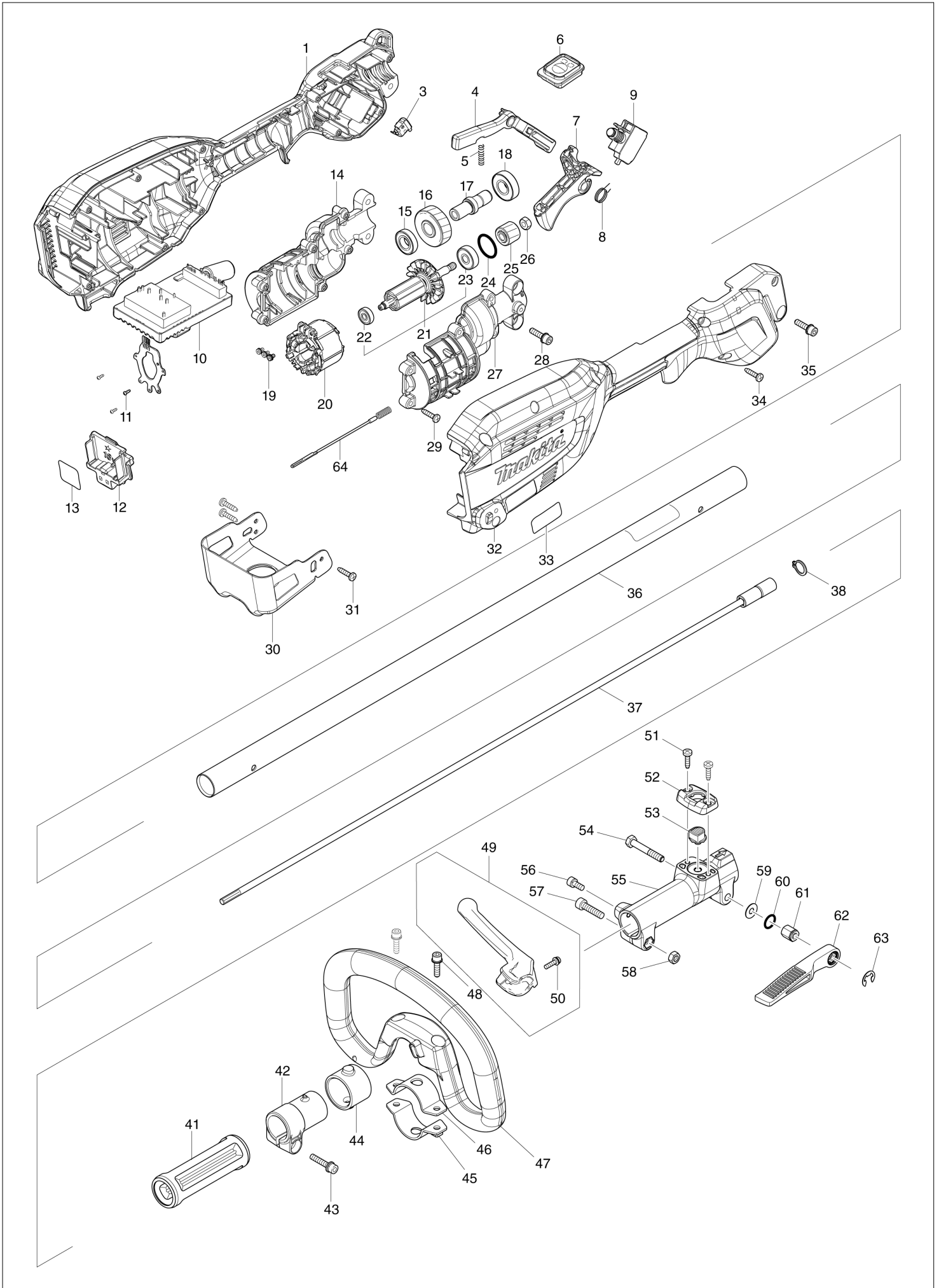
# Diagram / Parts List

**DUX18**

**CRDLSS MULTI FNCTN POWER HEAD**



(TH) DUX18 / CRDLSS MULTI FNCTN POWER HEAD



TH	THAILAND
----	----------

### DUX18 / CRDLSS MULTI FNCTN POWER HEAD

Item	Sub	Parts No.	Parts Description	Qty	I/C	E/C No.	Close No.	Remark
001		183R81-8	GRIP HOUSING SET	1				
	C10	263005-3	RUBBER PIN 6	2				
	C20	931202-6	HEX. NUT M5	1				
	D10		INC. 32					
004		412863-6	LOCK OFF LEVER	1				
005		233101-1	COMPRESSION SPRING 4	1				
006		140W41-3	SWITCH CIRCUIT COMPLETE	1				
	C10	8007N9-0	SWITCH LABEL	1				
007		459758-2	SWITCH LEVER	1				
008		233622-3	TORSION SPRING 12	1				
009		651494-8	SWITCH C3JW-1A-PA-2	1				
010		620D90-7	CONTROLLER	1				
011		266490-9	TAPPING SCREW PT 2X6	3				
012		644809-6	TERMINAL	1				
013		857X05-3	DUX18 SERIAL NO. LABEL	1				
014		183R80-0	MOTOR HOUSING SET	1				
	C10	931202-6	HEX. NUT M5	2				
	D10		INC. 27					
015		210243-8	BALL BEARING 6901ZZ	1				
016		227848-7	HELICAL GEAR 33	1				
017		327719-9	SPINDLE HUB	1				
018		210244-6	BALL BEARING 6001ZZ	1				
019		652069-6	FLAT HEAD SCREW M3X6	3				
020		629A28-1	STATOR	1				
021		519654-7	ROTOR ASS'Y	1				
	D10		INC. 22,23					
022		210235-7	BALL BEARING 625ZZ	1				
023		210236-5	BALL BEARING 627ZZ	1				
024		213843-3	O-RING 21	1			DB792	
024-1		213925-1	O-RING 21	1	O	DB792		
025		227849-5	HELICAL GEAR 16	1				
026		252153-3	HEX. NUT M6-10	1				
027		183R80-0	MOTOR HOUSING SET	1				
	C10	931202-6	HEX. NUT M5	2				
	D10		INC. 14					
028		922234-4	H.S.H.BOLT M5X20 WITH WG	2				
029		266326-2	TAPPING SCREW 4X18	6				
030		347765-6	BATTERY GUARD	1				
031		266326-2	TAPPING SCREW 4X18	3				
032		183R81-8	GRIP HOUSING SET	1				
	C10	263005-3	RUBBER PIN 6	2				
	C20	931202-6	HEX. NUT M5	1				
	D10		INC. 1					
033		857W99-2	DUX18 NAME PLATE	1				
034		266326-2	TAPPING SCREW 4X18	10				
035		922234-4	H.S.H.BOLT M5X20 WITH WG	1				
036		141B22-4	SHAFT PIPE B COMPLETE	1				
037		141238-9	SHAFT B COMPLETE	1				
038		961052-5	RETAINING RING (EXT) S-12	1				
041		451601-1	SPACER 24	1				
042		457269-1	PIPE HOLDER 24	1				
043		922244-1	H.S.H.BOLT M5X25 WITH WG	1				
044		424942-8	DAMPER	1				
045		347114-7	LOWER CLAMP 35	1				
046		347113-9	UPPER CLAMP 35	1				
047		457772-2	LOOP HANDLE	1				
	C10	263005-3	RUBBER PIN 6	1				
048		922234-4	H.S.H.BOLT M5X20 WITH WG	2				
049		144315-6	BARRIER COMPLETE	1				
	D10		INC. 50					
050		911128-8	P.H.SCREW M4X16 WITH WR	1				
051		266034-5	TAPPING SCREW CT 4X16	2				
052		452840-6	RELEASE BUTTON COVER	1				
053		452839-1	RELEASE BUTTON	1				
054		265596-0	HEX.BOLT M6X40	1				

A:DUX18Z(N)  
B:DUX18ZX1(N)

Interchange  
O : Yes  
X : No  
< : the new part can be substituted for the current.  
> : the current part can be substituted for the new.  
S : Interchangeable as a set.

