



**Cordless Kettle**  
**KT001G**



**40V** LI-ION  
**max**



Water tank capacity  
**0.8 L**

# Hot Water, Anytime Anywhere







**Powered by 40Vmax  
XGT Li-Ion battery**

Battery box is able to hold two XGT series batteries.



**Easy to carry around**



Kettle can be transferred easily on Power supply stand by holding the carrying handle of the stand.

**Dual layer structure**



Stainless steel interior plus plastic exterior\* provides high heat retention while keeping Kettle surface cool.  
\*There is an insulating layer of air between the interior and exterior layers.

**Removable lid**



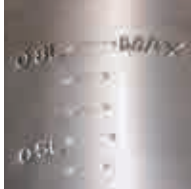
Removable for easy water supply and cleaning

**Anti-spill lock button**

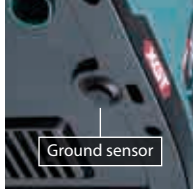


Provided to minimize spilling of hot water even if Kettle falls over.

**Easy to read water scale**



**Kettle can be turned on only when grounded.**



- Auto shut-off after boiling
- Boil-dry protection

Water tank capacity  
**0.8 L**

Boiling time (approx.)  
**8 min**

Battery BL4040 x2 capacity of boiling water (23°C) (approx.)  
**2.2 L**



**Portable Power Pack**

**PDC1200**  
Powered by 36V-40Vmax built-in battery



**Adapter set (40Vmax)**  
Part No. 191N62-4



**Line up**

**LED Flashlight**  
ML002G



**Job Site Radio**  
MR007G



**Cordless Cooler & Warmer Box**  
CW001G



**Accessories**

**Cup**  
Part No. KF00000020  
Capacity: 240mL



**Charging Time**

	Fast Charging	
	DC40RA	DC40RC
*1BL4020 2.0Ah	22 min	30 min
*1BL4025 2.5Ah	28 min	38 min
*1BL4040 4.0Ah	45 min	67 min
*1BL4050F 5.0Ah	50 min	85 min
*1BL4080F 8.0Ah	76 min	170 min

\*1 Recommended battery

not covered by EPTA-Procedure  
Items of standard equipment and specifications may vary by country or area.

**Cordless Kettle KT001G**

Water Tank Capacity	800 mL
Dimensions (L x W x H)	233 x 322 x 307 mm (9-1/8 x 12-5/8 x 12-1/8")
Net weight	2.8 - 5.9 kg (6.2 - 13.0 lbs.)

Approx amount of hot water for making drinks/foods	Boiling time (approx.) of 0.8L water			
	Water temperature	10°C	23°C	40°C
Instant/drip coffee	0.2 L			
Instant cup soup	0.15-0.23 L			
Instant cup noodles	0.3-0.5 L			
	Boiling time	9 min	8 min	6 min

**Makita Corporation**

3-11-8 Sumiyoshi-cho, Anjo, Aichi, 446-8502 Japan

PRINTED IN JAPAN 202201