



| | |
|----|----------|
| TH | THAILAND |
|----|----------|

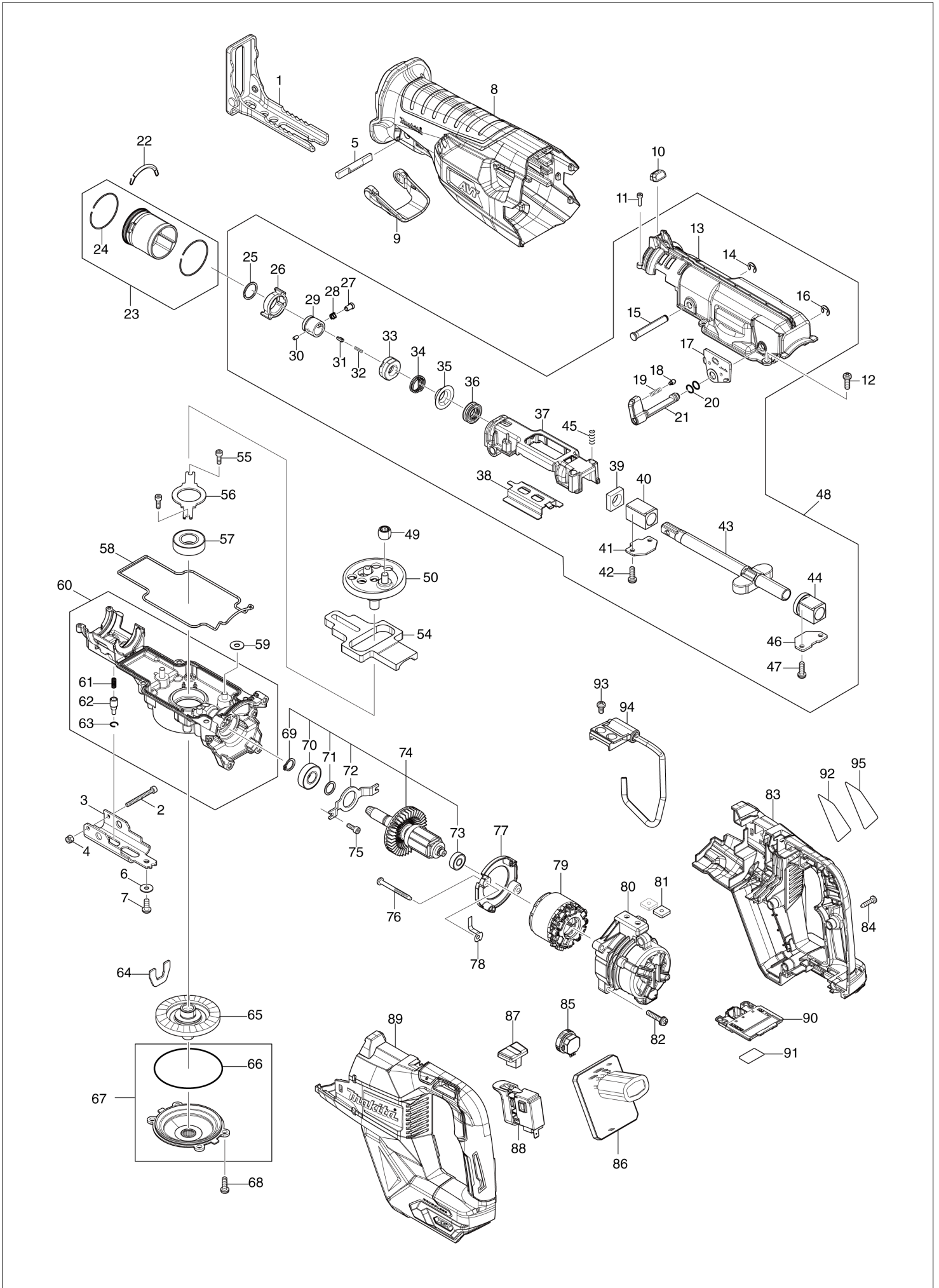
Diagram / Parts List

JR002G

CORDLESS RECIPRO SAW



(TH) JR002G / CORDLESS RECIPRO SAW



| | |
|-----------|-----------------|
| TH | THAILAND |
|-----------|-----------------|

JR002G / CORDLESS RECIPRO SAW

| Item | Sub | Parts No. | Parts Description | Qty | I/C | E/C No. | Close No. | Remark |
|-------|-----|-----------|-----------------------------|-----|-----|---------|-----------|--------|
| 001 | | 162B43-3 | SHOE | 1 | | | | |
| 002 | | 265A78-8 | HEX SOCKET HEAD BOLT M4X40 | 1 | | | | |
| 003 | | 347972-1 | SHOE GUIDE PLATE | 1 | | | | |
| 004 | | 252126-6 | HEX. LOCK NUT M4-7 | 1 | | | | |
| 005 | | 326599-0 | LOCK PIN | 1 | | | | |
| 006 | | 253194-2 | FLAT WASHER 5 | 1 | | | | |
| 007 | | 266169-2 | H.S. BUTTON HEAD BOLT M5X12 | 1 | | | | |
| 008 | | 422869-6 | INSULATION COVER | 1 | | | DL674 | |
| 008-1 | | 422962-6 | INSULATION COVER | 1 | O | DL674 | | |
| 009 | | 413F39-4 | LOCK LEVER | 1 | | | | |
| 010 | | 620H78-1 | LED CIRCUIT | 1 | | | | |
| 011 | | 265910-0 | HEX. SOCKET HEAD BOLT M3X12 | 2 | | | | |
| 012 | | 911225-0 | PAN HEAD SCREW M5X16 | 4 | | | | |
| 013 | | 141H98-7 | GEAR HOUSING COVER COMPLETE | 1 | | | | |
| | C10 | 422867-0 | SEAL PLATE | 1 | | | | |
| 014 | | 961012-7 | STOP RING E-6 | 1 | | | | |
| 015 | | 268012-1 | PIN 7 | 1 | | | | |
| 016 | | 961012-7 | STOP RING E-6 | 1 | | | | |
| 017 | | 413F41-7 | PLATE C | 1 | | | | |
| 018 | | 413F45-9 | PIN 5 | 1 | | | | |
| 019 | | 232745-4 | COMPRESSION SPRING 3 | 1 | | | | |
| 020 | | 213021-5 | O RING 5 | 2 | | | | |
| 021 | | 271471-0 | LEVER 24 | 1 | | | | |
| 022 | | 232583-4 | TENSION SPRING 3 | 1 | | | | |
| 023 | | 136707-3 | RELEASE DRUM ASS'Y | 1 | | | | |
| | D10 | | INC. 24 | | | | | |
| 024 | | 232746-2 | RING SPRING 39 | 2 | | | | |
| 025 | | 257430-8 | RETAINING RING(EXT)18 | 1 | | | | |
| 026 | | 313418-9 | DRIVING SLEEVE | 1 | | | | |
| 027 | | 256569-4 | SHOULDER PIN 5 | 1 | | | | |
| 028 | | 234381-2 | COMPRESSION SPRING 6 | 1 | | | | |
| 029 | | 327650-9 | GUIDE SLEEVE | 1 | | | | |
| 030 | | 256A11-1 | PIN 3 | 1 | | | | |
| 031 | | 310912-2 | PUSH PIN | 1 | | | | |
| 032 | | 232472-3 | COMPRESSION SPRING 2 | 1 | | | | |
| 033 | | 413F43-3 | CONNECTING SLEEVE | 1 | | | | |
| 034 | | 233594-2 | TORSION SPRING 17 | 1 | | | | |
| 035 | | 257742-9 | SHOULDER SLEEVE 14 | 1 | | | | |
| 036 | | 213174-0 | X RING 14 | 1 | | | | |
| 037 | | 141H95-3 | SLIDER SUPPORT COMPLETE | 1 | | | | |
| 038 | | 347973-9 | SLIDE PLATE | 1 | | | | |
| 039 | | 423343-7 | SEAL PLATE 14 | 1 | | | | |
| 040 | | 214212-1 | PLANE BEARING 14A | 1 | | | | |
| 041 | | 345485-6 | PLATE A | 1 | | | | |
| 042 | | 911225-0 | PAN HEAD SCREW M5X16 | 2 | | | | |
| 043 | | 162B44-1 | SLIDER | 1 | | | | |
| 044 | | 141H97-9 | BEARING COMPLETE | 1 | | | | |
| 045 | | 233038-2 | COMPRESSION SPRING 5 | 2 | | | | |
| 046 | | 345486-4 | PLATE B | 1 | | | | |
| 047 | | 911225-0 | PAN HEAD SCREW M5X16 | 2 | | | | |
| 048 | | 136683-1 | GEAR HOUSING COVER ASS'Y | 1 | | | | |
| | D10 | | INC. 13-21,25-47 | | | | | |
| 049 | | 212957-5 | NEEDLE BEARING 710 | 1 | | | | |
| 050 | | 136712-0 | CRANK CAM ASS'Y | 1 | | | | |
| 054 | | 313419-7 | COUNTER WEIGHT | 1 | | | | |
| 055 | | 922117-8 | HEX. SOCKET HEAD BOLT M4X12 | 2 | | | | |
| 056 | | 285051-6 | BEARING RETAINER 80 | 1 | | | | |
| 057 | | 211251-2 | BALL BEARING 6003LLB | 1 | | | | |
| 058 | | 422868-8 | SEAL RING | 1 | | | | |
| 059 | | 253804-1 | FLAT WASHER 6 | 3 | | | | |
| 060 | | 136676-8 | GEAR HOUSING ASS'Y | 1 | | | | |
| | D10 | | INC. 61-63 | | | | | |
| 061 | | 234084-8 | COMPRESSION SPRING 3 | 1 | | | | |
| 062 | | 256A09-8 | SHOULDER PIN 8 | 1 | | | | |
| 063 | | 232335-3 | RING SPRING 8 | 1 | | | | |

A:
B:

Interchange
O : Yes
X : No
< : the new part can be substituted for the current.
> : the current part can be substituted for the new.
S : Interchangeable as a set.

