



TH	THAILAND
----	----------

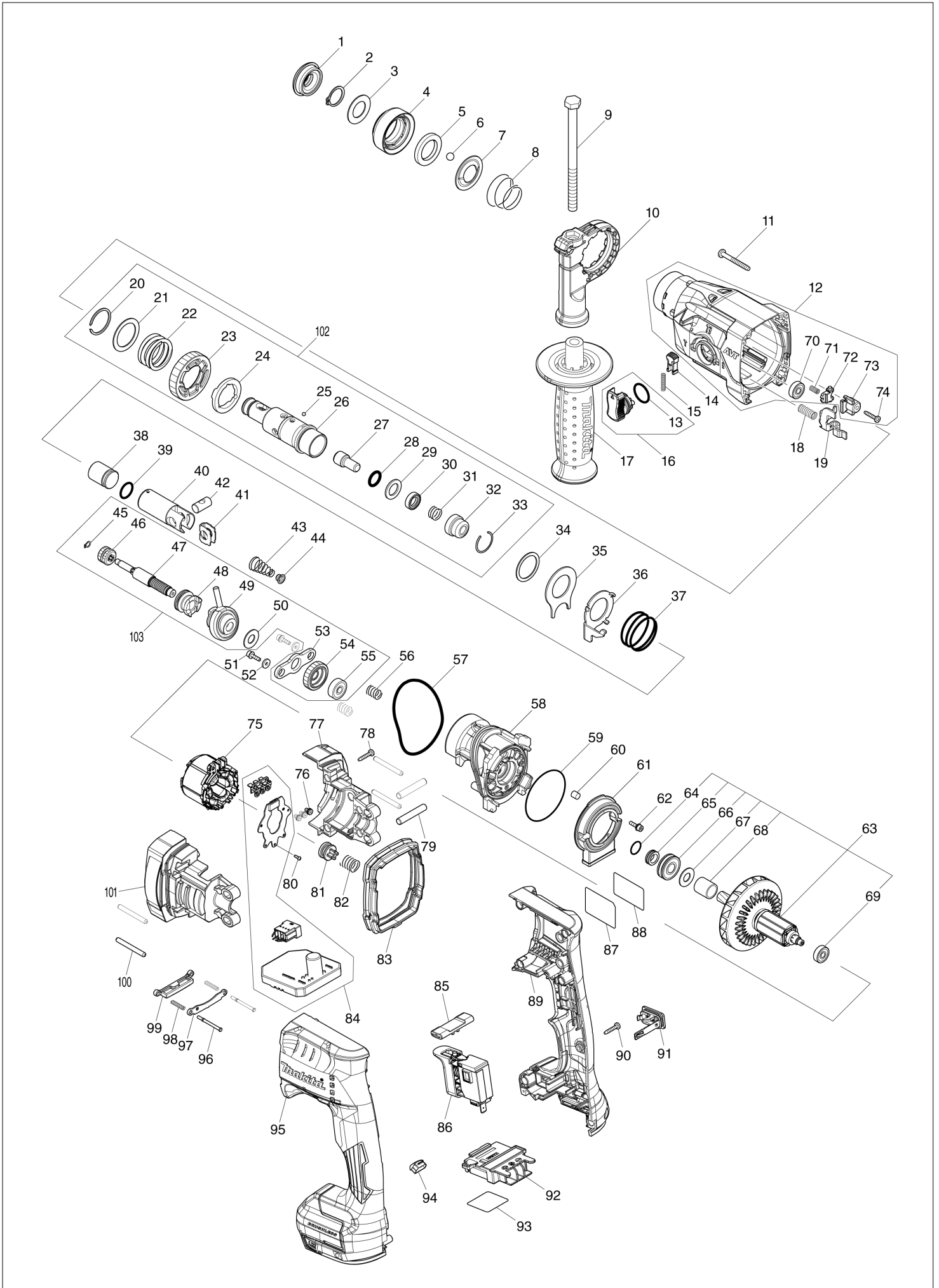
Diagram / Parts List

DHR182

18MM CRDLS COMBINATION HAMMER



(TH) DHR182 / 18MM CRDLS COMBINATION HAMMER



TH	THAILAND
-----------	-----------------

DHR182 / 18MM CRDLS COMBINATION HAMMER

Item	Sub	Parts No.	Parts Description	Qty	I/C	E/C No.	Close No.	Remark
001		286037-3	CAP 34	1				
002		961057-5	RETAINING RING S-17	1				
003		253377-4	FLAT WASHER 17	1				
004		458845-4	CHUCK COVER	1				
005		257416-2	RING 21	1				
006		216022-2	STEEL BALL 7.0	2				
007		346177-0	GUIDE WASHER	1				
008		232347-6	CONICAL COMP. SPRING 21-29	1				
009		921923-8	HEX. BOLT M8X120	1				
010		417911-6	GRIP BASE	1				
011		266053-1	TAPPING SCREW 4X35	4				
012		136043-7	GEAR HOUSING ASSY	1				
	C10	211375-4	BALL BEARING 6805LLB	1				
	C20	213874-2	OIL SEAL 25	1				
	D10		INC. 70-74					
013		213278-8	O RING 17	1				
014		458851-9	LOCK BUTTON	1				
015		234264-6	COMPRESSION SPRING 3	1				
016		136040-3	CHANGE LEVER ASSY	1				
	D10		INC. 13					
017		158057-6	GRIP 36 COMPLETE	1				
	C10	931402-8	HEX. NUT M8	1				
018		232473-1	COMPRESSION SPRING 8	1				
019		347463-2	CHANGE PLATE B	1				
020A		961135-1	RETAINING(EXT) WR-25	1			C9610	
020B		961135-1	RETAINING(EXT) WR-25	1			C9610	
020C		961135-1	RETAINING(EXT) WR-25	1			C9610	
020-1A		347555-7	SPIRAL RETAINING RING 25	1	O	C9610		
020-1B		347555-7	SPIRAL RETAINING RING 25	1	O	C9610		
020-1C		347555-7	SPIRAL RETAINING RING 25	1	O	C9610		
020-1D		347555-7	SPIRAL RETAINING RING 25	1				
021		267304-5	FLAT WASHER 25	1				
022		232360-4	COMPRESSION SPRING 25	1				
023		226854-9	SPUR GEAR 44	1				
024		327039-1	DRIVING FLANGE	1				
025		216019-1	STEEL BALL 3	3				
026		326886-7	TOOL HOLDER	1				
027		326887-5	IMPACT BOLT	1				
028		213117-2	O RING 11	1				
029		253380-5	FLAT WASHER 13	1				
030		326888-3	RING 10	1				
031		232357-3	COMPRESSION SPRING 10A	1				
032		327038-3	CUP SLEEVE	1				
033		233942-5	RING SPRING 22	1				
034		267175-0	FLAT WASHER 24	1				
035		345681-6	JOINT PLATE	1				
036		347462-4	CHANGE PLATE A	1				
037		233458-0	COMPRESSION SPRING 32	1				
038		327215-7	STRIKER	1				
039		213832-8	O-RING 13	1				
040		326890-6	PISTON CYLINDER	1				
041		347127-8	GUIDE PLATE	1				
042		324612-8	PISTON JOINT	1				
043		232361-2	CONICAL COMP. SPRING 6-13	1				
044		347130-9	SPRING GUIDE	1				
045		961008-8	RETAINING RING S-5	1				
046		226853-1	SPUR GEAR 12	1				
047		327216-5	CAM SHAFT	1				
048		327217-3	CLUTCH CAM	1				
049		219029-7	SWASH BEARING 9	1				
050		253733-8	FLAT WASHER 9	1				
051		251510-2	H. S. HEAD BOLT M3X12 WITH WRM	2				
052		253381-3	FLAT WASHER 3	2				
053		347129-4	SPRING PLATE	1				
054A		221496-4	HELICAL GEAR 23	1			C7014	

A:DHR182Z(N)
 B:DHR182ZU(N)
 C:DHR182RTJ(H)
 D:DHR182RFJ(H)

Interchange
 O : Yes
 X : No
 < : the new part can be substituted for the current.
 > : the current part can be substituted for the new.
 S : Interchangeable as a set.

TH	THAILAND
-----------	-----------------

DHR182 / 18MM CRDLS COMBINATION HAMMER

Item	Sub	Parts No.	Parts Description	Qty	I/C	E/C No.	Close No.	Remark
054B		221496-4	HELICAL GEAR 23	1			C7014	
054C		221496-4	HELICAL GEAR 23	1			C7014	
054-1A		226906-6	HELICAL GEAR 23	1	<	C7014		
054-1B		226906-6	HELICAL GEAR 23	1	<	C7014		
054-1C		226906-6	HELICAL GEAR 23	1	<	C7014		
054-1D		226906-6	HELICAL GEAR 23	1				
055		211016-2	BALL BEARING 626LLB	1				
056		232359-9	COMPRESSION SPRING 7	2				
057		213833-6	O-RING 60	1				
058		140F85-1	INNER HOUSING COMPLETE	1				
059		213641-5	O RING 51	1				
060		443138-2	FILTER	1				
061		458848-8	AIR DUCT	1				
062A		251510-2	H. S. HEAD BOLT M3X12 WITH WRM	2			D3583	
062B		251510-2	H. S. HEAD BOLT M3X12 WITH WRM	2			D3583	
062C		251510-2	H. S. HEAD BOLT M3X12 WITH WRM	2			D3583	
062-1A		251510-2	H. S. HEAD BOLT M3X12 WITH WRM	2	O	D3583		
062-1B		251510-2	H. S. HEAD BOLT M3X12 WITH WRM	2	O	D3583		
062-1C		251510-2	H. S. HEAD BOLT M3X12 WITH WRM	2	O	D3583		
062-1D		251510-2	H. S. HEAD BOLT M3X12 WITH WRM	2				
063		519549-4	ROTOR ASSY	1				
	D10		INC. 64-69					
064		213118-0	O RING 12	1				
065		327227-0	RING 9	1				
066		210162-8	BALL BEARING 609LLU	1				
067		267231-6	FLAT WASHER 9	1				
068A		458841-2	SLEEVE 12	1			C7014	
068B		458841-2	SLEEVE 12	1			C7014	
068C		458841-2	SLEEVE 12	1			C7014	
069		210035-5	BALL BEARING 625DDW	1				
070		210035-5	BALL BEARING 625DDW	1				
071		232474-9	COMPRESSION SPRING 4	1				
072		310913-0	LOCK PLATE	1				
073		458846-2	STOPPER PLATE	1				
074		266130-9	TAPPING SCREW BIND PT 3X16	1				
075		629393-2	STATOR	1				
076		652069-6	FLAT HEAD SCREW M3X6	3				
077		183L14-7	MOTOR HOUSING SET	1				
	D10		INC. 101					
078		266130-9	TAPPING SCREW BIND PT 3X16	4				
079		268076-5	PIN 6	2				
080		266490-9	TAPPING SCREW PT 2X6	3				
081		458847-0	SPRING SUPPORT	1				
082		232358-1	COMPRESSION SPRING 10B	1				
083		422354-9	BELLOWS	1				
084		620995-7	CONTROLLER	1				
085		458844-6	F/R CHANGE LEVER	1				
086		651380-3	SWITCH C3JW-6B-25	1				
087		855F52-0	DHR182 NAME PLATE	1				
088		818N47-2	CLEAR LABEL	1			DL865	
089		183L12-1	HANDLE SET	1				
	C10	263005-3	RUBBER PIN 6	2				
	C20	252126-6	HEX. LOCK NUT M4-7	2				
	D10		INC. 95					
090		266130-9	TAPPING SCREW BIND PT 3X16	7				
091		140F99-0	CAP COMPLETE	1				
	C10	213218-6	O RING 16	1			DA223	
	C11	213A05-9	O-RING16	1	O	DA223		
	C10	213218-6	O RING 16	1			DA223	
	C11	213A05-9	O-RING16	1	O	DA223		
	C10	213218-6	O RING 16	1			DA223	
	C11	213A05-9	O-RING16	1	O	DA223		
	C11	213A05-9	O-RING16	1				
	C20	818H07-8	CAP LABEL	1				
092		643874-2	TERMINAL	1				

A:DHR182Z(N)
 B:DHR182ZU(N)
 C:DHR182RTJ(H)
 D:DHR182RFJ(H)

Interchange
 O : Yes
 X : No
 < : the new part can be substituted for the current.
 > : the current part can be substituted for the new.
 S : Interchangeable as a set.

TH	THAILAND
-----------	-----------------

DHR182 / 18MM CRDLS COMBINATION HAMMER

Item	Sub	Parts No.	Parts Description	Qty	I/C	E/C No.	Close No.	Remark
093		855F59-6	DHR182 SERIAL NO. LABEL	1				
094		620549-0	LED CIRCUIT	1				
095		183L12-1	HANDLE SET	1				
	C10	263005-3	RUBBER PIN 6	2				
	C20	252126-6	HEX. LOCK NUT M4-7	2				
	D10		INC. 89					
096		256586-4	FLAT FILLISTER HEAD PIN 2.5	2				
097		458850-1	GUIDE PLATE	1				
098		232475-7	COMPRESSION SPRING 3	2				
099		458849-6	SHATTER	1				
100		256585-6	ROD 4	4				
101		183L14-7	MOTOR HOUSING SET	1				
	D10		INC. 77					
102A		136041-1	TOOL HOLDER ASSY	1			C9610	
	D10		INC. 20-33				C9610	
102B		136041-1	TOOL HOLDER ASSY	1			C9610	
	D10		INC. 20-33				C9610	
102C		136041-1	TOOL HOLDER ASSY	1			C9610	
	D10		INC. 20-33				C9610	
102-1A		136154-8	TOOL HOLDER ASS'Y	1	O	C9610		
	D10		INC. 20-33			C9610		
102-1B		136154-8	TOOL HOLDER ASS'Y	1	O	C9610		
	D10		INC. 20-33			C9610		
102-1C		136154-8	TOOL HOLDER ASS'Y	1	O	C9610		
	D10		INC. 20-33			C9610		
102-1D		136154-8	TOOL HOLDER ASS'Y	1				
	D10		INC. 20-33					
103		136042-9	CAM SHAFT ASSY	1				
	D10		INC. 45-50,53-55					
A01		415486-9	DEPTH GAUGE	1				
A02C		821552-6	CONNECTOR PLASTIC CASE (TYPE4)	1				
	C10	453974-8	LATCH	4				
A02D		821552-6	CONNECTOR PLASTIC CASE (TYPE4)	1				
	C10	453974-8	LATCH	4				
A03C		818S67-6	DHR182RTJ PLASTIC CASE LABEL	2				
A03D		8010D2-5	DHR182RFJ PLASTIC CASE LABEL	2				
A04C		450128-8	BATTERY COVER	1				
A04D		450128-8	BATTERY COVER	1				
A05C		***DC18RC	DC18RC FAST CHARGER	1				
	D10		COMPO-PARTS					
A05D		***DC18RC	DC18RC FAST CHARGER	1				
	D10		COMPO-PARTS					
A06C		199282-0	BATTERY BL1850B SET	2			D0161	
A06-1C		199282-0	BATTERY BL1850B SET	2	<	D0161		
A06-1D		199283-8	BATTERY BL1830B SET	2				
A08C		839891-0	INNER TRAY	1				
A08D		839891-0	INNER TRAY	1				
A09B		199393-1	WIRELESS UNIT SET	1			D4357	
A09-1B		199393-1	WIRELESS UNIT SET	1	<	D4357	DB384	
A09-2B		199393-1	WIRELESS UNIT SET	1	<	DB384		
A10C		818S66-8	DHR182RTJ INDICATION LABEL	1				
A10D		8010D3-3	DHR182RFJ INDICATION LABEL	1				
B01A		199544-6	HAMMER SERVICE KIT	1		Y08292		
	C10	195127-0	OIL VESSEL SET	1		Y08292		
	D10		INC. 1,2,6,28,33,39			Y08292		
B01B		199544-6	HAMMER SERVICE KIT	1		Y08292		
	C10	195127-0	OIL VESSEL SET	1		Y08292		
	D10		INC. 1,2,6,28,33,39			Y08292		
B01C		199544-6	HAMMER SERVICE KIT	1		Y08292		
	C10	195127-0	OIL VESSEL SET	1		Y08292		
	D10		INC. 1,2,6,28,33,39			Y08292		
B01D		199544-6	HAMMER SERVICE KIT	1				
	C10	195127-0	OIL VESSEL SET	1				
	D10		INC. 1,2,6,28,33,39					
F11-2		199393-1	WIRELESS UNIT SET	1	<	DB384		

A:DHR182Z(N)
 B:DHR182ZU(N)
 C:DHR182RTJ(H)
 D:DHR182RFJ(H)

Interchange
 O : Yes
 X : No
 < : the new part can be substituted for the current.
 > : the current part can be substituted for the new.
 S : Interchangeable as a set.

