



Cordless Jig Saw

Satisfy Professional's Needs

BJV140 **14.4V**
LITHIUM-ION

BJV180 **18V**
LITHIUM-ION

High Accuracy and High Efficiency

Compact and Lightweight Design

BJV140: 2.7kg (5.9lbs)

BJV180: 2.8kg (6.1lbs)



LITHIUM-ION



Extremely Low Vibration and Low Noise

Lock-off Button

prevents accidental starting

Ergonomically Rubberized Handle

Provides comfortable gripping and more control while minimizing hand fatigue and pain.

Large, 2-Finger Variable Speed Trigger Switch

Easy-to-operate even with gloved hand

Life time work volume

Extreme Battery Stamina 430%

in comparison with Makita Ni-cd 2.0Ah batteries

Powered by 3.0Ah Li-ion Battery;
BJV140 by BL1430 (14.4V)
BJV180 by BL1830 (18V)

Charging time 22minutes
with Fast Charger DC18RA



Powerful DC Motor

Long life with replaceable Carbon Brushes

Dust Nozzle (Standard Equipment: European countries only)

Front dust shield is not required.
Can be connected to vacuum with Hose Complete 28-5.

3 Orbital Settings + Straight Cut

Sawdust Blowing Feature

Dust blower for cleaning line of cut

LED Job Light

Excellent efficiency in dimly-lit place

Toolless Blade Change (push-in lock system)

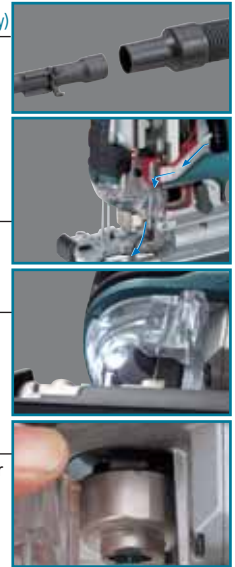
Enables extremely fast blade changes.

Cover Plate

Plastic cover plate to protect materials from scratches.

High Dust-proof Construction

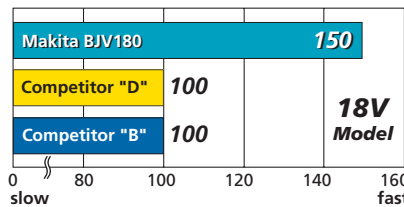
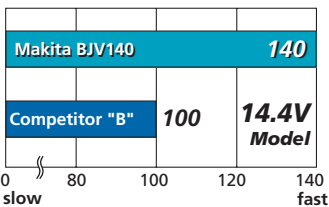
Rubber Dust Seal at Rod and Retainer shuts out the dust and protects the machine from the damage.



Comparison of Cutting Efficiency

Note: 1. The test results depend to a great extent on the hardness of materials, etc.
2. The numbers in the bar charts below are relative values when the capacities of Competitor "B" or "D" are indexed at 100.

Test material: MDF of 300mm width with 48mm thick Orbital mode: 3 Blade: Makita B-16L



Accessories

Guide Rail

1.4m Part No. 194368-5
3.0m Part No. 194367-7

Guide Rail Adapter Set

Part No. 193517-1

Anti-Splintering Device

(For cleaner cuts)
Part No. 192557-6

Guide Rule Set

Part No. 193516-3

Cover Plate

Part No. 417852-6

Dust Nozzle

Part No. 417853-4

Hose Complete 28-5

Part No. A-34229

Cordless Jig Saw

- Electric Brake
- Dust Collecting
- Variable Speed
- Orbital Cutting
- Bayonet Shank Jig Saw Blade
- Carrying Case
- Built-in Job Light



BJV140 / BJV180

Capacity	In wood at 90 degrees : 135mm (5-5/16")* In steel at 90 degrees : 10mm (3/8")
Length of stroke	26mm (1")
Strokes per min.	0 - 2,600
Dimensions (L x W x H)	255 x 73 x 208mm (10" x 2-7/8" x 8-3/16") BJV140 257 x 73 x 208mm (10-1/8" x 2-7/8" x 8-3/16") BJV180
Net weight	2.7kg (5.9lbs) BJV140, 2.8kg (6.1lbs) BJV180
Voltage	14.4V BJV140, 18V BJV180

* when cutting with optional blade No. B-16L

Standard Equipment Jig Saw Blade Set (No. B-10, BR-13, B-22; 2each), Cover Plate, Anti-Splintering Device, Hex Wrench

Items of standard equipment and specifications may differ by country or area.

Makita Corporation

3-11-8 Sumiyoshi-cho, Anjo, Aichi, 446-8502 Japan

PRINTED IN JAPAN Z23269-2 2007-01