



TH	THAILAND
----	----------

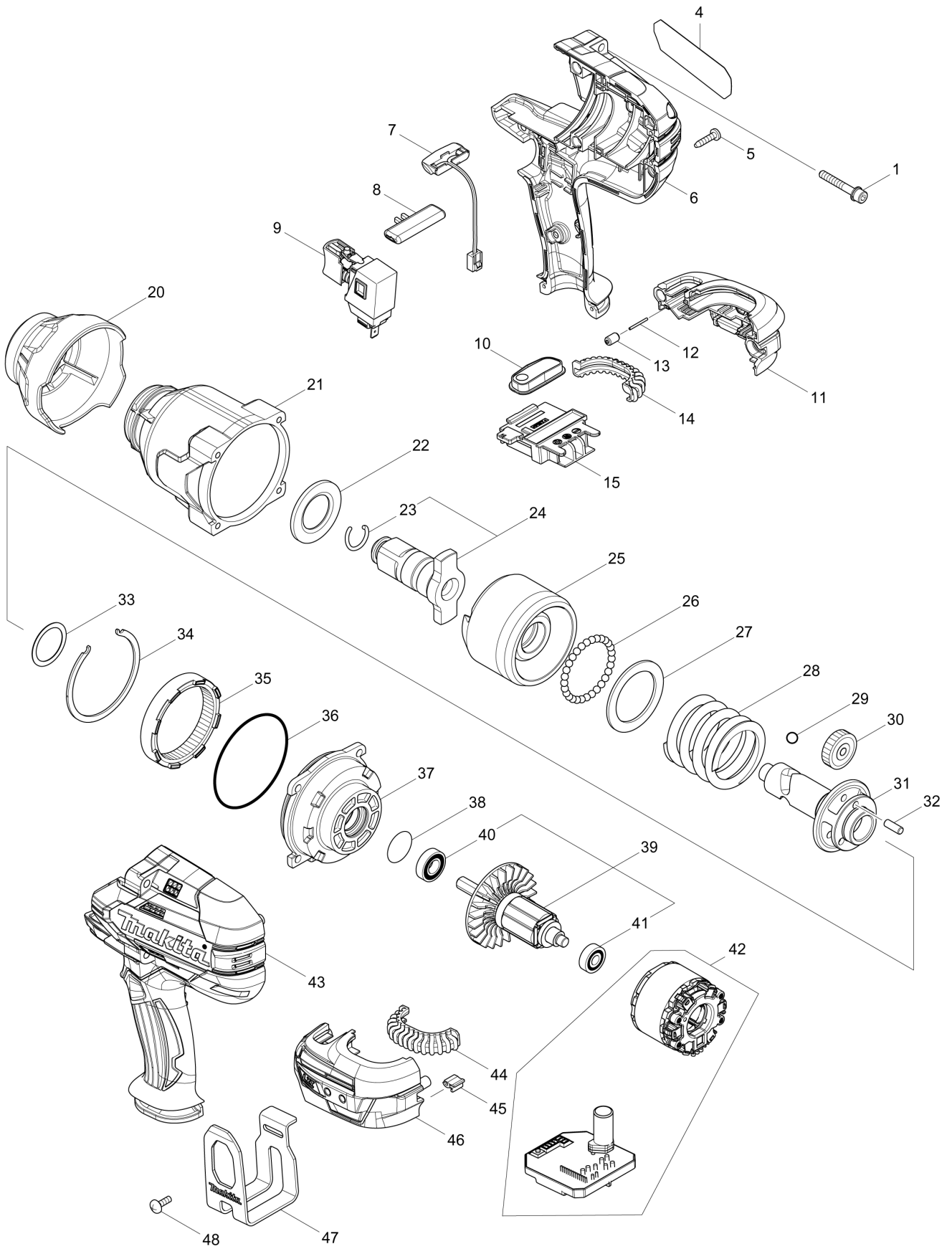
# Diagram / Parts List

**DTW1001**

**CORDLESS IMPACT WRENCH**



(TH) DTW1001 / CORDLESS IMPACT WRENCH



<b>TH</b>	<b>THAILAND</b>
-----------	-----------------

### DTW1001 / CORDLESS IMPACT WRENCH

Item	Sub	Parts No.	Parts Description	Qty	I/C	E/C No.	Close No.	Remark
001		251476-6	H.S.H.BOLT M5X35 WITH WR	4			DJ608	
001-1		265D13-4	H.S.H.BOLT M5X35 WITH WRM	4	<	DJ608		
004A		851K74-8	DTW1001 NAME PLATE	1			D2981	
004B		851K74-8	DTW1001 NAME PLATE	1			D2981	
004C		851K74-8	DTW1001 NAME PLATE	1			D2981	
004D		851K74-8	DTW1001 NAME PLATE	1			D2981	
004-1A		857K63-1	DTW1001 NAME PLATE	1	S	D2981		
004-1B		857K63-1	DTW1001 NAME PLATE	1	S	D2981		
004-1C		857K63-1	DTW1001 NAME PLATE	1	S	D2981		
004-1D		857K63-1	DTW1001 NAME PLATE	1	S	D2981		
004-1E		857K63-1	DTW1001 NAME PLATE	1				
004-1F		857K63-1	DTW1001 NAME PLATE	1				
005		266326-2	TAPPING SCREW 4X18	9			DP571	
005-1		265995-6	TAPPING SCREW 4X18	9	O	DP571		
006A		183C08-8	HOUSING SET	1			B9714	
	D10		INC. 43				B9714	
006B		183C08-8	HOUSING SET	1			B9714	
	D10		INC. 43				B9714	
006C		183C08-8	HOUSING SET	1			B9714	
	D10		INC. 43				B9714	
006D		183C08-8	HOUSING SET	1			B9714	
	D10		INC. 43				B9714	
006-1A		183H36-3	HOUSING SET	1	O	B9714	DP022	
	D10		INC. 43			B9714	DP022	
006-1B		183H36-3	HOUSING SET	1	O	B9714	DP022	
	D10		INC. 43			B9714	DP022	
006-1C		183H36-3	HOUSING SET	1	O	B9714	DP022	
	D10		INC. 43			B9714	DP022	
006-1D		183H36-3	HOUSING SET	1	O	B9714	DP022	
	D10		INC. 43			B9714	DP022	
006-1E		183H36-3	HOUSING SET	1			DP022	
	D10		INC. 43				DP022	
006-1F		183H36-3	HOUSING SET	1			DP022	
	D10		INC. 43				DP022	
006-2		1830A6-1	HOUSING SET	1	<	DP022		
	D10		INC. 43			DP022		
007		620351-1	LED CIRCUIT	1				
008		456268-0	F/R CHANGE LEVER	1				
009		143416-7	SWITCH COMPLETE	1				
010		143417-5	SWITCH PLATE COMPLETE	1				
011		183C12-7	BATTERY HOUSING SET	1				
	C10	263005-3	RUBBER PIN 6	2				
	D10		INC. 46					
012		268284-8	PIN 1.5	1				
013		263036-2	RUBBER PIN 5	1				
014		424773-5	CUSHION RUBBER	1			DK168	
014-1		422A56-3	CUSHION RUBBER	1	<	DK168		
015		643899-6	TERMINAL	1				
020A		424775-1	BUMPER	1			B6398	
020B		424775-1	BUMPER	1			B6398	
020C		424775-1	BUMPER	1			B6398	
020D		424775-1	BUMPER	1			B6398	
020-1A		424978-7	BUMPER	1	<	B6398		
020-1B		424978-7	BUMPER	1	<	B6398		
020-1C		424978-7	BUMPER	1	<	B6398		
020-1D		424978-7	BUMPER	1	<	B6398		
020-1E		424978-7	BUMPER	1				
020-1F		424978-7	BUMPER	1				
021A		143411-7	HAMMER CASE COMPLETE	1			B6398	
021B		143411-7	HAMMER CASE COMPLETE	1			B6398	
021C		143411-7	HAMMER CASE COMPLETE	1			B6398	
021D		143411-7	HAMMER CASE COMPLETE	1			B6398	
021-1A		144473-8	HAMMER CASE COMPLETE	1	S	B6398		
021-1B		144473-8	HAMMER CASE COMPLETE	1	S	B6398		
021-1C		144473-8	HAMMER CASE COMPLETE	1	S	B6398		

A:DTW1001Z(N)  
 B:DTW1001RMJ(H)  
 C:DTW1001RFJ(H)  
 D:DTW1001RTJ(H)  
 E:DTW1001ZX2(N)  
 F:DTW1001JX3(H)

Interchange  
 O : Yes  
 X : No  
 < : the new part can be substituted for the current.  
 > : the current part can be substituted for the new.  
 S : Interchangeable as a set.

<b>TH</b>	<b>THAILAND</b>
-----------	-----------------

**DTW1001 / CORDLESS IMPACT WRENCH**

Item	Sub	Parts No.	Parts Description	Qty	I/C	E/C No.	Close No.	Remark
021-1D		144473-8	HAMMER CASE COMPLETE	1	S	B6398		
021-1E		144473-8	HAMMER CASE COMPLETE	1				
021-1F		144473-8	HAMMER CASE COMPLETE	1				
022		346948-5	WASHER 25	1				
023A		231920-9	RING SPRING 16	1			B3666	
023B		231920-9	RING SPRING 16	1			B3666	
023C		231920-9	RING SPRING 16	1			B3666	
023D		231920-9	RING SPRING 16	1			B3666	
023-1A		232334-5	RING SPRING 16	1	<	B3666		
023-1B		232334-5	RING SPRING 16	1	<	B3666		
023-1C		232334-5	RING SPRING 16	1	<	B3666		
023-1D		232334-5	RING SPRING 16	1	<	B3666		
023-1E		232334-5	RING SPRING 16	1				
023-1F		232334-5	RING SPRING 16	1				
024A		135716-9	ANVIL E ASS'Y	1			B3909	
	D10		INC. 23				B3909	
024B		135716-9	ANVIL E ASS'Y	1			B3909	
	D10		INC. 23				B3909	
024C		135716-9	ANVIL E ASS'Y	1			B3909	
	D10		INC. 23				B3909	
024D		135716-9	ANVIL E ASS'Y	1			B3909	
	D10		INC. 23				B3909	
024-1A		135803-4	ANVIL E ASS'Y	1	<	B3909		
	D10		INC. 23			B3909		
024-1B		135803-4	ANVIL E ASS'Y	1	<	B3909		
	D10		INC. 23			B3909		
024-1C		135803-4	ANVIL E ASS'Y	1	<	B3909		
	D10		INC. 23			B3909		
024-1D		135803-4	ANVIL E ASS'Y	1	<	B3909		
	D10		INC. 23			B3909		
024-1E		135803-4	ANVIL E ASS'Y	1				
	D10		INC. 23					
024-1F		135803-4	ANVIL E ASS'Y	1				
	D10		INC. 23					
025		326612-4	HAMMER	1				
026		216002-8	STEEL BALL 4.8	29				
027		267493-6	FLAT WASHER 38	1				
028		234383-8	COMPRESSION SPRING 38	1				
029		216009-4	STEEL BALL 7.1	2				
030A		227391-6	SPUR GEAR 24	3			C6016	
030B		227391-6	SPUR GEAR 24	3			C6016	
030C		227391-6	SPUR GEAR 24	3			C6016	
030D		227391-6	SPUR GEAR 24	3			C6016	
030-1A		226879-3	SPUR GEAR 24	3	<	C6016	C6017	
030-1B		226879-3	SPUR GEAR 24	3	<	C6016	C6017	
030-1C		226879-3	SPUR GEAR 24	3	<	C6016	C6017	
030-1D		226879-3	SPUR GEAR 24	3	<	C6016	C6017	
030-2A		226880-8	SPUR GEAR 24	3	O	C6017		
030-2B		226880-8	SPUR GEAR 24	3	O	C6017		
030-2C		226880-8	SPUR GEAR 24	3	O	C6017		
030-2D		226880-8	SPUR GEAR 24	3	O	C6017		
030-2E		226880-8	SPUR GEAR 24	3				
030-2F		226880-8	SPUR GEAR 24	3				
031		326611-6	SPINDLE	1				
032		268079-9	PIN 5	3				
033A		267494-4	FLAT WASHER 25	1			D3627	
033B		267494-4	FLAT WASHER 25	1			D3627	
033C		267494-4	FLAT WASHER 25	1			D3627	
033D		267494-4	FLAT WASHER 25	1			D3627	
033-1A		267127-1	FLAT WASHER 26	1	O	D3627		
033-1B		267127-1	FLAT WASHER 26	1	O	D3627		
033-1C		267127-1	FLAT WASHER 26	1	O	D3627		
033-1D		267127-1	FLAT WASHER 26	1	O	D3627		
033-1E		267127-1	FLAT WASHER 26	1				
033-1F		267127-1	FLAT WASHER 26	1				

A:DTW1001Z(N)  
 B:DTW1001RMJ(H)  
 C:DTW1001RFJ(H)  
 D:DTW1001RTJ(H)  
 E:DTW1001ZX2(N)  
 F:DTW1001JX3(H)

Interchange  
 O : Yes  
 X : No  
 < : the new part can be substituted for the current.  
 > : the current part can be substituted for the new.  
 S : Interchangeable as a set.

<b>TH</b>	<b>THAILAND</b>
-----------	-----------------

**DTW1001 / CORDLESS IMPACT WRENCH**

Item	Sub	Parts No.	Parts Description	Qty	I/C	E/C No.	Close No.	Remark
034		346947-7	RETAINER	1				
035		227392-4	INTERNAL SPUR GEAR 54	1				
036		213720-9	O RING 67	1				
037		135718-5	INTERNAL GEAR CASE ASS'Y	1				
	D10		INC. 36,38					
038		213961-7	O RING 22	1				
039A		519384-0	ROTOR ASS'Y	1			C9384	
	D10		INC. 40,41				C9384	
039B		519384-0	ROTOR ASS'Y	1			C9384	
	D10		INC. 40,41				C9384	
039C		519384-0	ROTOR ASS'Y	1			C9384	
	D10		INC. 40,41				C9384	
039D		519384-0	ROTOR ASS'Y	1			C9384	
	D10		INC. 40,41				C9384	
039-1A		519593-1	ROTOR ASS'Y	1	O	C9384		
	D10		INC. 40,41			C9384		
039-1B		519593-1	ROTOR ASS'Y	1	O	C9384		
	D10		INC. 40,41			C9384		
039-1C		519593-1	ROTOR ASS'Y	1	O	C9384		
	D10		INC. 40,41			C9384		
039-1D		519593-1	ROTOR ASS'Y	1	O	C9384		
	D10		INC. 40,41			C9384		
039-1E		519593-1	ROTOR ASS'Y	1				
	D10		INC. 40,41					
039-1F		519593-1	ROTOR ASS'Y	1				
	D10		INC. 40,41					
040		210069-8	BALL BEARING 6900DDW	1				
041		211022-7	BALL BEARING 607ZZ	1				
042A		629170-2	STATOR COMPLETE	1			B8967	
042B		629170-2	STATOR COMPLETE	1			B8967	
042C		629170-2	STATOR COMPLETE	1			B8967	
042D		629170-2	STATOR COMPLETE	1			B8967	
042-1A		629330-6	STATOR COMPLETE	1	<	B8967	DE552	
042-1B		629330-6	STATOR COMPLETE	1	<	B8967	DE552	
042-1C		629330-6	STATOR COMPLETE	1	<	B8967	DE552	
042-1D		629330-6	STATOR COMPLETE	1	<	B8967	DE552	
042-2A		629B59-6	STATOR	1	S	DE552		
042-2B		629B59-6	STATOR	1	S	DE552		
042-2C		629B59-6	STATOR	1	S	DE552		
042-2D		629B59-6	STATOR	1	S	DE552		
042-2E		629B59-6	STATOR	1				
042-2F		629B59-6	STATOR	1				
043A		183C08-8	HOUSING SET	1			B9714	
	D10		INC. 6				B9714	
043B		183C08-8	HOUSING SET	1			B9714	
	D10		INC. 6				B9714	
043C		183C08-8	HOUSING SET	1			B9714	
	D10		INC. 6				B9714	
043D		183C08-8	HOUSING SET	1			B9714	
	D10		INC. 6				B9714	
043-1A		183H36-3	HOUSING SET	1	O	B9714	DP022	
	D10		INC. 6			B9714	DP022	
043-1B		183H36-3	HOUSING SET	1	O	B9714	DP022	
	D10		INC. 6			B9714	DP022	
043-1C		183H36-3	HOUSING SET	1	O	B9714	DP022	
	D10		INC. 6			B9714	DP022	
043-1D		183H36-3	HOUSING SET	1	O	B9714	DP022	
	D10		INC. 6			B9714	DP022	
043-1E		183H36-3	HOUSING SET	1			DP022	
	D10		INC. 6				DP022	
043-1F		183H36-3	HOUSING SET	1			DP022	
	D10		INC. 6				DP022	
043-2		1830A6-1	HOUSING SET	1	<	DP022		
	D10		INC. 6			DP022		
044		424773-5	CUSHION RUBBER	1			DK168	

A:DTW1001Z(N)  
 B:DTW1001RMJ(H)  
 C:DTW1001RFJ(H)  
 D:DTW1001RTJ(H)  
 E:DTW1001ZX2(N)  
 F:DTW1001JX3(H)

Interchange  
 O : Yes  
 X : No  
 < : the new part can be substituted for the current.  
 > : the current part can be substituted for the new.  
 S : Interchangeable as a set.

<b>TH</b>	<b>THAILAND</b>
-----------	-----------------

### DTW1001 / CORDLESS IMPACT WRENCH

Item	Sub	Parts No.	Parts Description	Qty	I/C	E/C No.	Close No.	Remark
044-1		422A56-3	CUSHION RUBBER	1	<	DK168		
045		424517-3	CUSHION	1				
046		183C12-7	BATTERY HOUSING SET	1				
	C10	263005-3	RUBBER PIN 6	2				
	D10		INC. 11					
047		346949-3	HOOK	1				
048		251314-2	+ SCREW M4X12	2				
049A		857K64-9	DTW1001 SERIAL NO. LABEL	1	S	D2981		
049B		857K64-9	DTW1001 SERIAL NO. LABEL	1	S	D2981		
049C		857K64-9	DTW1001 SERIAL NO. LABEL	1	S	D2981		
049D		857K64-9	DTW1001 SERIAL NO. LABEL	1	S	D2981		
049E		857K64-9	DTW1001 SERIAL NO. LABEL	1				
049F		857K64-9	DTW1001 SERIAL NO. LABEL	1				
050A		620K29-2	CONTROLLER	1	S	DE552		
050B		620K29-2	CONTROLLER	1	S	DE552		
050C		620K29-2	CONTROLLER	1	S	DE552		
050D		620K29-2	CONTROLLER	1	S	DE552		
050E		620K29-2	CONTROLLER	1				
050F		620K29-2	CONTROLLER	1				
051A		652119-7	PAN HEAD SCREW M2X6	6	S	DE552		
051B		652119-7	PAN HEAD SCREW M2X6	6	S	DE552		
051C		652119-7	PAN HEAD SCREW M2X6	6	S	DE552		
051D		652119-7	PAN HEAD SCREW M2X6	6	S	DE552		
051E		652119-7	PAN HEAD SCREW M2X6	6				
051F		652119-7	PAN HEAD SCREW M2X6	6				
A01B		***DC18RC	DC18RC FAST CHARGER	1				
A01C		***DC18RC	DC18RC FAST CHARGER	1				
A01D		***DC18RC	DC18RC FAST CHARGER	1				
A01E		161347-8	SHOULDER BELT	1				
A01F		***DC18RC	DC18RC FAST CHARGER	1				
A02B		197265-4	BATTERY BL1840B SET	2			C5218	
A02C		196015-4	BATTERY BL1830 SET	2			B2535	
A02D		197280-8	BATTERY BL1850B SET	2			C2803	
A02-1B		197265-4	BATTERY BL1840B SET	2	O	C5218		
A02-1C		197600-6	BATTERY BL1830B SET	2	<	B2535	C2803	
A02-1D		199282-0	BATTERY BL1850B SET	2	<	C2803	D0161	
A02-2C		199283-8	BATTERY BL1830B SET	2	<	C2803	D0159	
A02-2D		199282-0	BATTERY BL1850B SET	2	<	D0161		
A02-3C		199283-8	BATTERY BL1830B SET	2	<	D0159		
A02-3F		199283-8	BATTERY BL1830B SET	2				
A03B		450128-8	BATTERY COVER	1				
A03C		450128-8	BATTERY COVER	1				
A03D		450128-8	BATTERY COVER	1				
A03F		450128-8	BATTERY COVER	1				
A04B		821551-8	CONNECTOR PLASTIC CASE (TYPE3)	1				
	C10	453974-8	LATCH	4				
A04C		821551-8	CONNECTOR PLASTIC CASE (TYPE3)	1				
	C10	453974-8	LATCH	4				
A04D		821551-8	CONNECTOR PLASTIC CASE (TYPE3)	1				
	C10	453974-8	LATCH	4				
A04F		821551-8	CONNECTOR PLASTIC CASE (TYPE3)	1				
	C10	453974-8	LATCH	4				
A05B		837645-9	INNER TRAY	1				
A05C		837645-9	INNER TRAY	1				
A05D		837645-9	INNER TRAY	1				
A05F		837645-9	INNER TRAY	1				
A06B		808B95-7	DTW1001RMJ INDICATION LABEL	1			D2767	
A06C		808B97-3	DTW1001RFJ INDICATION LABEL	1			D2767	
A06D		808B99-9	DTW1001RTJ INDICATION LABEL	1			D2767	
A06-1B		817B44-3	DTW1001RMJ INDICATION LABEL	1	<	D2767		
A06-1C		817B45-1	DTW1001RFJ INDICATION LABEL	1	<	D2767		
A06-1D		817B46-9	DTW1001RTJ INDICATION LABEL	1	<	D2767		
A06-1F		8060S1-7	DTW1001JX3 INDICATION LABEL	1				
A07B		808B96-5	DTW1001RMJ PLASTIC CASE LABEL	2				
A07C		808B98-1	DTW1001RFJ PLASTIC CASE LABEL	2				

A:DTW1001Z(N)  
 B:DTW1001RMJ(H)  
 C:DTW1001RFJ(H)  
 D:DTW1001RTJ(H)  
 E:DTW1001ZX2(N)  
 F:DTW1001JX3(H)

Interchange  
 O : Yes  
 X : No  
 < : the new part can be substituted for the current.  
 > : the current part can be substituted for the new.  
 S : Interchangeable as a set.

