



TH	THAILAND
----	----------

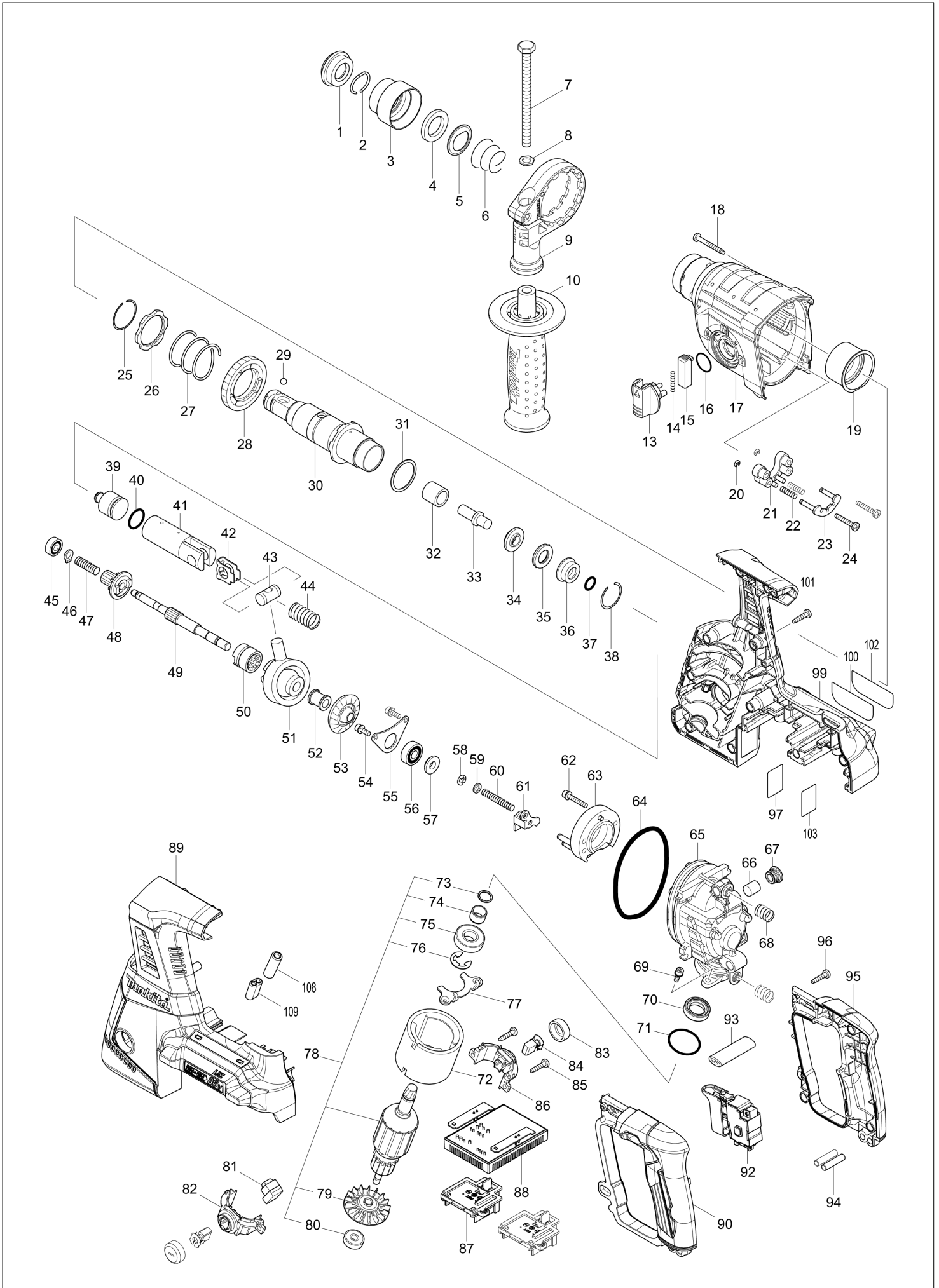
# Diagram / Parts List

**DHR263**

**26MM CRDLS COMBINATION HAMMER**



# (TH) DHR263 / 26MM CRDLS COMBINATION HAMMER



TH	THAILAND
----	----------

### DHR263 / 26MM CRDLS COMBINATION HAMMER

Item	Sub	Parts No.	Parts Description	Qty	I/C	E/C No.	Close No.	Remark
001		286263-4	CAP 35	1				
002		233940-9	RING SPRING 19	1				
003		417629-9	CHUCK COVER	1				
004		257241-1	RING 21	1				
005		345187-4	GUIDE WASHER	1				
006		233916-6	CONICAL COMP. SPRING 21-29	1				
007		921923-8	HEX. BOLT M8X120	1				
008		345280-4	HEX. WASHER	1				
009		417630-4	GRIP BASE	1				
010		158057-6	GRIP 36 COMPLETE	1				
013		450980-4	CHANGE LEVER	1				
014		233279-0	COMPRESSION SPRING 4	1				
015		453706-3	LOCK BUTTON	1				
016		213278-8	O RING 17	1				
017		158945-7	GEAR HOUSING COMPLETE	1				
	C10	213345-9	OIL SEAL 25	1				
018		266560-4	TAPPING SCREW 4X40	4				
019		153290-5	NEEDLE BEARING COMPLETE	1				
020		961017-7	STOP RING E-3	2				
021		417796-0	GUIDE BASE	1				
022		233344-5	COMPRESSION SPRING 4	2				
023		163430-7	LOCK PLATE COMPLETE	1				
024		266374-1	TAPPING SCREW 4X25	2				
025		233929-7	RING SPRING 29	1				
026		267460-1	WASHER 31	1				
027		233401-9	COMPRESSION SPRING 32	1				
028		227109-5	SPUR GEAR 51	1				
029		216022-2	STEEL BALL 7.0	1				
030		158574-6	TOOL HOLDER COMPLETE	1				
031		267229-3	FLAT WASHER 28	1				
032		331769-8	SLEEVE 9	1				
033		324669-9	IMPACT BOLT	1				
034		324402-9	RING 10	1				
035		421955-0	CUSHION RING 13	1				
036		324216-6	O RING CASE	1				
037		213073-6	O RING 9	1				
038		233917-4	RING SPRING 28	1				
039		326404-1	STRIKER	1				
040		213227-5	O RING 16	1				
041		318132-2	PISTON CYLINDER	1				
042		346036-8	GUIDE PLATE	1				
043		324215-8	PISTON JOINT	1				
044		234098-7	COMPRESSION SPRING 14	1				
045		211012-0	BALL BEARING 606ZZ	1				
046		961003-8	RETAINING RING S-7	1				
047		233343-7	COMPRESSION SPRING 7	1				
048		227179-4	SPUR GEAR 10	1				
049		325976-3	CAM SHAFT	1				
050		331992-5	CLUTCH CAM	1				
051		219014-0	SWASH BEARING 10	1				
052		325640-6	SLEEVE 9	1				
053		227549-7	SPIRAL BEVEL GEAR 26	1				
054		266273-7	HEX. SOCKET HEAD BOLT M4X12	2				
055		346038-4	BEARING RETAINER B	1				
056		211032-4	BALL BEARING 608ZZ	1				
057		324212-4	RING 8	1				
058		961011-9	STOP RING E-4	1				
059		941102-2	FLAT WASHER 5	1				
060		233342-9	COMPRESSION SPRING 6	1				
061		345220-2	CHANGE PLATE	1				
062		922148-7	HEX. SOCKET HEAD BOLT M4X25	2				
063		158944-9	INNER SUPPORT COMPLETE	1				
064		213728-3	O-RING 68	1				
065		318392-6	INNER HOUSING	1				
066		443143-9	FILTER	1				

A:DHR263Z(N)  
 B:DHR263RF2(H)  
 C:DHR263RM2(H)

Interchange  
 O : Yes  
 X : No  
 < : the new part can be substituted for the current.  
 > : the current part can be substituted for the new.  
 S : Interchangeable as a set.

<b>TH</b>	<b>THAILAND</b>
-----------	-----------------

### DHR263 / 26MM CRDLS COMBINATION HAMMER

Item	Sub	Parts No.	Parts Description	Qty	I/C	E/C No.	Close No.	Remark
067		424185-2	CAP	1				
068		234097-9	COMPRESSION SPRING 10	2				
069		266273-7	HEX. SOCKET HEAD BOLT M4X12	2				
070		213231-4	OIL SEAL 15	1				
071		213437-4	O RING 28	1				
072		632828-4	YOKE UNIT	1				
073		961082-6	RETAINING RING WR12	1				
074		331596-3	SLEEVE 12	1				
075		211131-2	BALL BEARING 6001DDW	1				
076		961016-9	STOP RING E-10	1				
077		346037-6	BEARING RETAINER A	1				
078		519235-7	ARMATURE ASS'Y 36V	1				
	D10		INC. 73-76,79,80					
079		240037-7	FAN 44	1				
080		210022-4	BALL BEARING 626DDW	1				
081		620281-6	LIGHT CIRCUIT	1				
082		644507-2	BRUSH HOLDER	1				
083		643829-7	HOLDER CAP	2				
084		195023-2	CARBON BRUSH SET CB-442	1				
085		266326-2	TAPPING SCREW 4X18	2				
086		644508-0	BRUSH HOLDER	1				
087		644808-8	TERMINAL	2				
088		620280-8	CONTROLLER	1				
089		187833-1	HOUSING SET	1				
	C10	263005-3	RUBBER PIN 6	8				
	C20	263025-7	RUBBER PIN 4	4				
	C30	346783-1	PLATE	4				
	C40	803F15-0	INDICATION LABEL	1				
	D10		INC. 99					
090		187771-7	HANDLE SET	1				
	D10		INC. 95					
092		650721-0	SWITCH	1				
093		454980-6	F/R CHANGE LEVER	1				
094		256261-2	PIN 6	2				
095		187771-7	HANDLE SET	1				
	D10		INC. 90					
096		266326-2	TAPPING SCREW 4X18	4				
097		815K28-9	DHR263 SERIAL NO. LABEL	1				
099		187833-1	HOUSING SET	1				
	C10	263005-3	RUBBER PIN 6	8				
	C20	263025-7	RUBBER PIN 4	4				
	C30	346783-1	PLATE	4				
	C40	803F15-0	INDICATION LABEL	1				
	D10		INC. 89					
100		815K11-6	DHR263 NAME PLATE	1				
101		266326-2	TAPPING SCREW 4X18	10				
102		803F14-2	CLEAR LABEL	1			DL865	
103		893072-0	CLEAR LABEL	1				
A01		194683-7	GREASE VESSEL SET	1				
A02		324219-0	DEPTH GAUGE	1				
A03		443122-7	CLOTH	1				
A04B		***DC18RC	DC18RC FAST CHARGER	1				
A04C		***DC18RC	DC18RC FAST CHARGER	1				
A05B		196015-4	BATTERY BL1830 SET	2			A5588	
A05-1B		196015-4	BATTERY BL1830 SET	2	O	A5588	B2535	
A05-2B		197600-6	BATTERY BL1830B SET	2	<	B2535	C2803	
A05-2C		197265-4	BATTERY BL1840B SET	2			C5218	
A05-3B		199283-8	BATTERY BL1830B SET	2	<	C2803	D0159	
A05-3C		197265-4	BATTERY BL1840B SET	2	O	C5218		
A05-4B		199283-8	BATTERY BL1830B SET	2	<	D0159		
A06B		142551-8	PLASTIC CASE COMPLETE	1				
	C10	162271-8	LATCH	2				
	C20	325636-7	SHAFT	1				
	C30	450990-1	HANDLE	1				
A06C		142551-8	PLASTIC CASE COMPLETE	1				

A:DHR263Z(N)  
 B:DHR263RF2(H)  
 C:DHR263RM2(H)

Interchange  
 O : Yes  
 X : No  
 < : the new part can be substituted for the current.  
 > : the current part can be substituted for the new.  
 S : Interchangeable as a set.

