



Accessories

Nozzle assembly*

- For floor
Part No.
 127825-8
 127827-4
 127828-2

Nozzle assembly

- For floor/carpet
Part No.
 191X06-4

Nozzle assembly

- For floor
Part No.
 123486-2
 123488-8
 123539-7

Sheet Nozzle

- Part No.
 199038-1
 199041-2
 199039-9

Flexible hose

- Part No. 191E30-3

Flexible hose

- Part No.
 198868-7
 198545-1
 198547-7

Sash nozzle*

- Part No.
 413770-6
 413859-0
 413809-5

Long sash nozzle

- Part No.
 198919-6
 198990-0
 198992-6

Nozzle holder*

- Part No.
 459354-6
 459355-4
 459038-6

Round brush

- Part No.
 198878-4
 198553-2
 198555-8

Crevice nozzle 415

- Part No. 199439-3

Shelf brush

- Part No.
 198873-4
 198538-8
 198540-1

Straight pipe set 340

- For Cyclone attachment set
Part No.
 191D76-3
 191D78-9
 191D77-1

Straight pipe with pipe lock*

- Part No.
 459353-8
 459356-2
 458942-6

Straight pipe with pipe lock

- Part No.
 1910Y3-1
 L: 479-719mm

Tool bag set

- Part No. 199901-8
 LxWxH:
 600x210x
 190mm

DCL283F / DCL284F only

- Filter set**
 10pcs/set
 Part No. 198915-4

Pre-filter

- Part No. 198751-8

Easy shake off filter B set

- Part No. 199966-0

Filter H set

- Part No. 199989-8
HEPA filter

DCL283F / DCL284F / DCL285F only

Cyclone attachment set with pipe lock

- Part No.
 191D71-3
 191D73-9

Holder Set

- Part No. 199971-7

DCL285F only

Dust bag set (cloth)

- Part No. 198747-9

Paper filter set (cloth)

- 5pcs/set
 Part No. 198745-3
 10pcs/set
 Part No. 198744-5

High performance dust bag set

- Part No. 1910M4-5

DCL283F / DCL284F / DCL286F only

Cyclone unit set

- Part No.
 1910D3-4
 1910D4-2
 1910D5-0

Only for Cyclone unit set

High performance filter set

- Part No. 1910C7-9

Filter H set

- Part No. 1910C9-5
HEPA filter

*Standard Equipment

Charging Time

	DC18RC	DC18SD
BL1815N 1.5Ah	15 min	30 min
BL1820B 2.0Ah	24 min	45 min
BL1830B 3.0Ah	22 min	60 min
BL1840B 4.0Ah	36 min	90 min
BL1850B 5.0Ah	45 min	110 min
BL1860B 6.0Ah	55 min	130 min

Cordless Cleaner				
DCL283F / DCL284F / DCL285F / DCL286F				
	DCL283F	DCL284F	DCL285F	DCL286F
4 Electronic 4-Speed DCL284F/DCL285F/ DCL286F only	Capacity 730 mL	730 mL	Normal dust bag / Paper filter: 500 / 330 mL	Cyclone: 250 mL
LED Built-in Job Light	Continuous Use w/ BL1830B: 10 min	w/ BL1830B, Mode 1 / 2 / 3 / 4: 38 / 21 / 15 / 8	w/ BL1830B, Mode 1 / 2 / 3 / 4: 38 / 21 / 15 / 8	w/ BL1830B, Mode 1 / 2 / 3 / 4: 38 / 21 / 15 / 8
	Max air flow 1.1 m ³ /min	1.2 m ³ /min	1.2 m ³ /min	1.0 m ³ /min
	Max sealed suction 17.5 kPa	18 kPa	18 kPa	18 kPa
	Noise level 63 dB(A)	Mode 1 / 2 / 3 / 4: 54 / 60 / 62 / 65 dB(A)	Mode 1 / 2 / 3 / 4: 54 / 60 / 62 / 65 dB(A)	Mode 1 / 2 / 3 / 4: 55 / 60 / 62 / 66 dB(A)
	Dimensions (L x W x H) w/o Pipe & Nozzle, w/ BL1830B: 503 x 113 x 155 mm (19-3/4 x 4-7/16 x 6-1/8")	w/o Pipe & Nozzle, w/ BL1830B: 503 x 113 x 153 mm (19-3/4 x 4-7/16 x 6")	w/o Pipe & Nozzle, w/ BL1830B: 503 x 113 x 153 mm (19-3/4 x 4-7/16 x 6")	w/o Pipe & Nozzle, w/ BL1830B: 543 x 113 x 177 mm (21-3/8 x 4-7/16 x 7")
	w/ Pipe & Nozzle, w/ BL1830B: 1,066 x 113 x 155 mm (42 x 4-7/16 x 6-1/8")	w/ Pipe & Nozzle, w/ BL1830B: 1,066 x 113 x 153 mm (42 x 4-7/16 x 6")	w/ Pipe & Nozzle, w/ BL1830B: 1,066 x 113 x 153 mm (42 x 4-7/16 x 6")	w/ Pipe & Nozzle, w/ BL1830B: 1,106 x 113 x 177 mm (43-1/2 x 4-7/16 x 7")
	Net weight 1.3 - 1.6 kg (2.9 - 3.5 lbs.)	1.3 - 1.6 kg (2.9 - 3.5 lbs.)	1.4 - 1.7 kg (3.1 - 3.7 lbs.)	1.6 - 1.9 kg (3.5 - 4.2 lbs.)

Standard Equipment : Nozzle assembly, Sash nozzle, Nozzle holder, Straight pipe, Easy shake off filter EX (DCL283F, DCL284F), Easy shake off dust bag (DCL285F), Paper dust bag (DCL285F), Easy shake off filter (DCL286F), Battery, Charger

The weight does not include accessories but battery cartridge(s). The lightest and heaviest combination weight of the appliance and battery cartridge(s) are shown in the table. Items of standard equipment and specifications may vary by country or area.



Cordless Cleaner
DCL283F / DCL284F
DCL285F / DCL286F

	Max air flow	Max sealed suction
DCL283F	1.1 m ³ /min	17.5 kPa
DCL284F	1.2 m ³ /min	18 kPa
DCL285F		
DCL286F	1.0 m ³ /min	



photo: DCL286F



Makita Corporation

3-11-8 Sumiyoshi-cho, Anjo, Aichi, 446-8502 Japan

PRINTED IN JAPAN 202302





photo: DCL284F



photo: DCL283F



photo: DCL285F



photo: DCL286F

18V LXT BL Cordless Cleaner

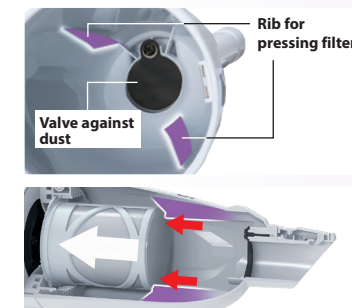
Capsule type

Dust capacity **730 mL**



Improved dust-resistance

When capsule is installed securely, two ribs inside capsule press the inside frame of filter to hold the filter tight.



DCL283F

Trigger switch

DCL284F

One-touch push button switch



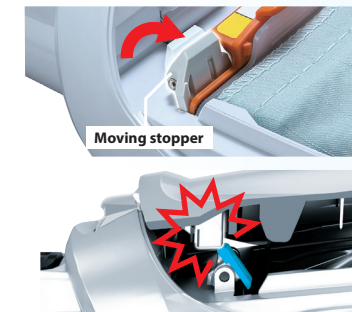
Paper dust bag type

Dust capacity
Cloth dust bag **500 mL**
Paper dust bag **330 mL**



Improved dust-resistance

Moving stopper prevents front cover from closing if paper dust bag is not installed tight.



DCL285F

One-touch push button switch



High performance dust bag set
High-performance dust bag that matches the shape of the dust collection space of the high vacuum model.

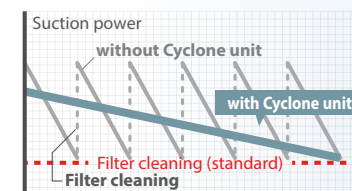
Integrated cyclone unit

Dust capacity **250 mL**



Integrated Cyclone unit

The filter is less clogged due to separation of fine dust through a cyclone air flow, reducing the decrease in vacuum power of cleaner.



the amount of dust that can be sucked before filter maintenance

DCL286F

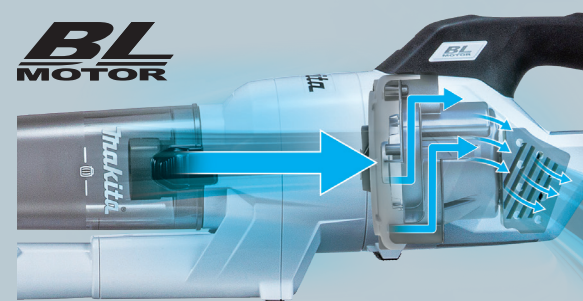
One-touch push button switch



Easy filter setting
Filter can be fixed with a single push.

High suction power and Low noise level

- Achieved by redesigning the exhaust air flow path of the motor to reduce wind noise.
- Equipped with high-speed BL motor to ensure high suction power.



Low noise

DCL283F

63 [Mode 4] dB(A)

DCL284F **65** [Mode 4] dB(A)
DCL285F

DCL286F **66** [Mode 4] dB(A)

Redesigned Floor/ Carpet T-nozzle

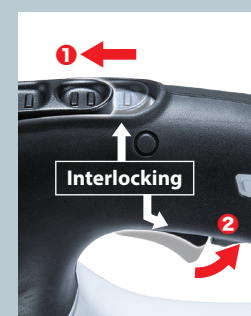
- Redesigned structure reduces the resistance caused by suction, providing smooth running.
- Redesigned inside air flow path reduces the noise made inside the nozzle.



Trigger switch + Sliding lock-on switch

(DCL283F only)

allows for long continuous cleaning with less fatigue.

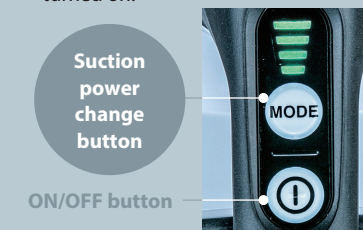


By moving ① sliding lock-on switch to ON position, ② interlocking trigger switch can be locked on for continuous cleaning.

4-suction power mode selection with mode memory function

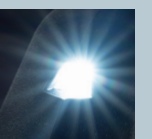
(DCL284F / DCL285F / DCL286F only)

- The cleaner can memorize a previous power mode and resume vacuuming at the same mode as last time user turned off for user convenience.
- Power mode can be selected before the cleaner is turned on.



Single LED job light

also functions as a battery capacity warning lamp.



Pipe locking mechanism

Pipe is fixed with the locking mechanism to prevent it from accidentally coming off.



Pipe with beveled end

Cleaning of tight places can be done without nozzle by using the beveled end of pipe as a nozzle.

