



|    |          |
|----|----------|
| TH | THAILAND |
|----|----------|

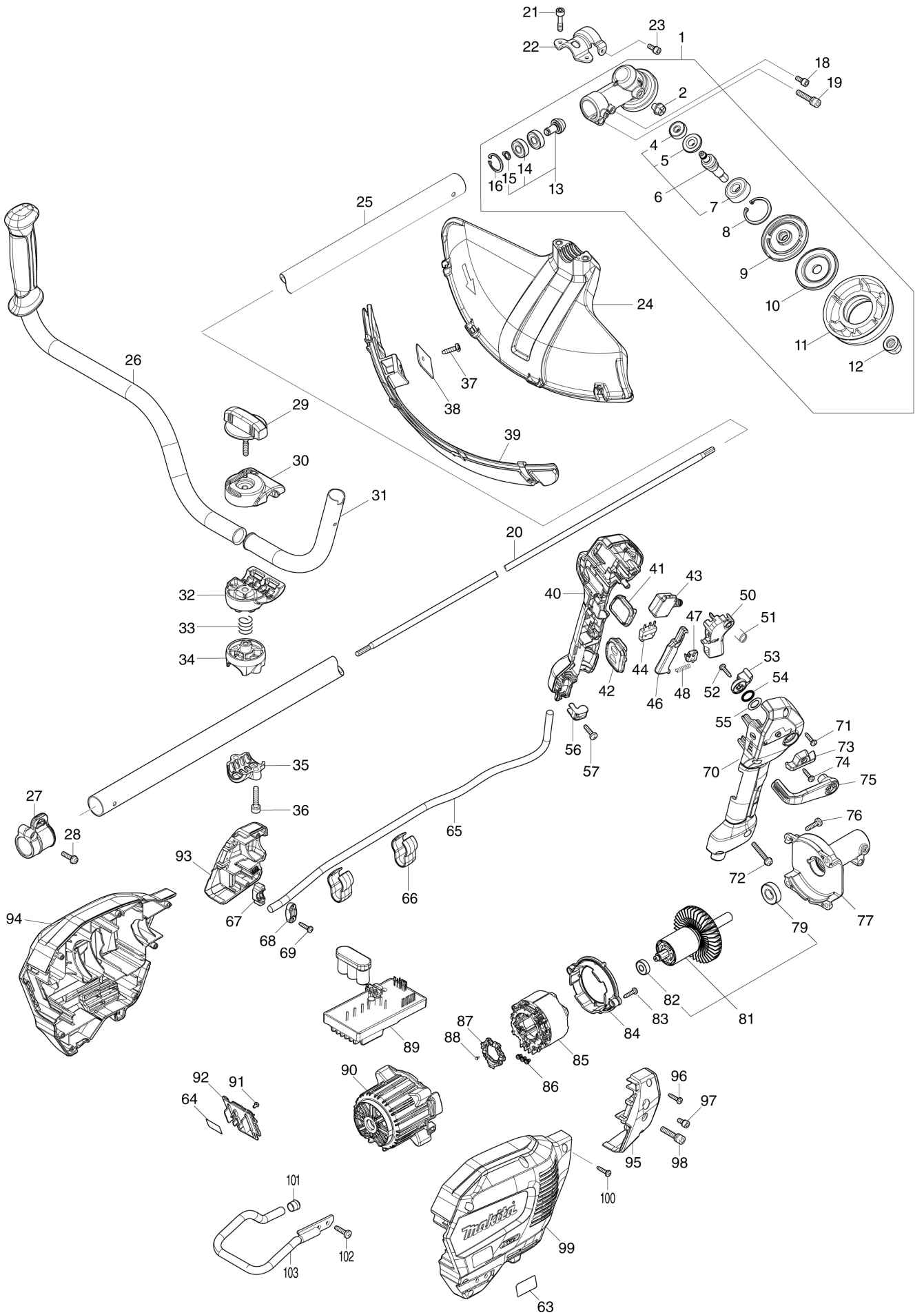
# Diagram / Parts List

**UR013G**

**CORDLESS GRASS TRIMMER**



(TH) UR013G / CORDLESS GRASS TRIMMER



|    |          |
|----|----------|
| TH | THAILAND |
|----|----------|

### UR013G / CORDLESS GRASS TRIMMER

| Item | Sub | Parts No. | Parts Description             | Qty | I/C | E/C No. | Close No. | Remark |
|------|-----|-----------|-------------------------------|-----|-----|---------|-----------|--------|
| 001  |     | 122D71-2  | GEAR CASE ASSEMBLY G          | 1   |     |         |           |        |
|      | D10 |           | INC. 2,6,8-13,16              |     |     |         |           |        |
| 002  |     | 265590-2  | +HEX.BOLT M8X10 WITH R        | 1   |     |         |           |        |
| 004  |     | 210030-5  | BALL BEARING 627ZZ            | 1   |     |         |           |        |
| 005  |     | 226988-8  | SPIRAL BEVEL GEAR 19          | 1   |     |         |           |        |
| 006  |     | 136923-7  | CUTTER SHAFT US ASSEMBLY      | 1   |     |         |           |        |
|      | D10 |           | INC. 4,5,7                    |     |     |         |           |        |
| 007  |     | 211228-7  | BALL BEARING 6202DDW          | 1   |     |         |           |        |
| 008  |     | 259069-3  | RETAINING RING (INT) R-35     | 1   |     |         |           |        |
| 009  |     | 140N88-3  | RECEIVE WASHER COMPLETE       | 1   |     |         |           |        |
| 010  |     | 347766-4  | CLAMP WASHER US               | 1   |     |         |           |        |
| 011  |     | 413201-5  | CUP US                        | 1   |     |         |           |        |
| 012  |     | 252236-9  | HEX. LOCK NUT M10-17          | 1   |     |         |           |        |
| 013  |     | 136922-9  | SPIRAL BEVEL GEAR ASSEMBLY    | 1   |     |         |           |        |
|      | D10 |           | INC. 14,15                    |     |     |         |           |        |
| 014  |     | 210157-1  | BALL BEARING 609ZZ            | 2   |     |         |           |        |
| 015  |     | 259071-6  | RETAINING RING (EXT) S-9      | 1   |     |         |           |        |
| 016  |     | 259072-4  | RETAINING RING (INT)R-24      | 1   |     |         |           |        |
| 018  |     | 922216-6  | H.S.H.BOLT M5X14 WITH W       | 1   |     |         |           |        |
| 019  |     | 922353-6  | HEX.SOCKET HEAD BOLT M6X30    | 1   |     |         |           |        |
| 020  |     | 326205-7  | SHAFT                         | 1   |     |         |           |        |
| 021  |     | 266280-0  | HEX. SOCKET HEAD BOLT M6X25   | 2   |     |         |           |        |
| 022  |     | 347B13-5  | PROTECTOR CLAMP 25G           | 1   |     |         |           |        |
| 023  |     | 922216-6  | H.S.H.BOLT M5X14 WITH W       | 1   |     |         |           |        |
| 024  |     | 413P07-7  | PROTECTOR U 450               | 1   |     |         |           |        |
| 025  |     | 141N28-4  | SHAFT PIPE COMPLETE A         | 1   |     |         |           |        |
|      | C10 | 819312-8  | MAKITA LOGO LABEL             | 1   |     |         |           |        |
|      | C20 | 8040V7-0  | CAUTION LABEL                 | 1   |     |         |           |        |
| 026  |     | 141D27-6  | HANDLE 22L COMPLETE           | 1   |     |         |           |        |
|      | C10 | 273014-4  | GRIP 36                       | 1   |     |         |           |        |
| 027  |     | 141N34-9  | HANGER                        | 1   |     |         |           |        |
|      | C10 | 931202-6  | HEX. NUT M5                   | 1   |     |         |           |        |
| 028  |     | 911233-1  | PAN HEAD SCREW M5X20          | 1   |     |         |           |        |
| 029  |     | 162965-5  | KNOB 57                       | 1   |     |         |           |        |
| 030  |     | 144313-0  | UPPER HANDLE HOLDER COMPLETE  | 1   |     |         |           |        |
|      | C10 | 263005-3  | RUBBER PIN 6                  | 1   |     |         |           |        |
| 031  |     | 327837-3  | HANDLE 22 R                   | 1   |     |         |           |        |
| 032  |     | 319517-5  | LOWER HANDLE HOLDER           | 1   |     |         |           |        |
| 033  |     | 233309-7  | COMPRESSION SPRING 17         | 1   |     |         |           |        |
| 034  |     | 312D92-4  | UPPER PIPE HOLDER 25          | 1   |     |         |           |        |
| 035  |     | 312D93-2  | LOWER PIPE HOLDER 25          | 1   |     |         |           |        |
| 036  |     | 922351-0  | HEX. SOCKET HEAD BOLT M6X30   | 2   |     |         |           |        |
| 037  |     | 266388-0  | TAPPING SCREW 5X16            | 1   |     |         |           |        |
| 038  |     | 347115-5  | CUTTER                        | 1   |     |         |           |        |
| 039  |     | 144316-4  | PROTECTOR U EXT. 420-450 COMP | 1   |     |         |           |        |
|      | C10 | 346696-6  | HOOK                          | 2   |     |         |           |        |
|      | C20 | 232284-4  | LEAF SPRING                   | 2   |     |         |           |        |
| 040  |     | 183X45-8  | GRIP SET                      | 1   |     |         |           |        |
|      | C10 | 252180-0  | HEX. LOCK NUT M5-8            | 1   |     |         |           |        |
|      | D10 |           | INC. 70                       |     |     |         |           |        |
| 041  |     | 141N49-6  | INDICATION CIRCUIT COMPLETE E | 1   |     |         |           |        |
| 042  |     | 141N45-4  | SWITCH CIRCUIT COMPLETE G     | 1   |     |         |           |        |
|      | C10 | 8064D7-4  | SWITCH LABEL                  | 1   |     |         |           |        |
| 043  |     | 651492-2  | SWITCH C3JR-1A-PAXD3          | 1   |     |         |           |        |
| 044  |     | 632U35-5  | SWITCH UNIT                   | 1   |     |         |           |        |
| 046  |     | 459146-3  | LOCK OFF LEVER                | 1   |     |         |           |        |
| 048  |     | 233101-1  | COMPRESSION SPRING 4          | 1   |     |         |           |        |
| 050  |     | 413N90-2  | SWITCH LEVER                  | 1   |     |         |           |        |
| 051  |     | 233622-3  | TORSION SPRING 12             | 1   |     |         |           |        |
| 052  |     | 266326-2  | TAPPING SCREW 4X18            | 1   |     |         |           |        |
| 053  |     | 413N92-8  | LINK                          | 1   |     |         |           |        |
| 054  |     | 213154-6  | O RING 14                     | 1   |     |         |           |        |
| 055  |     | 253798-0  | FLAT WASHER 13                | 1   |     |         |           |        |
| 056  |     | 687260-7  | STRAIN RELIEF                 | 1   |     |         |           |        |
| 057  |     | 266326-2  | TAPPING SCREW 4X18            | 1   |     |         |           |        |

A:UR013GZ07(N)

Interchange

O : Yes

X : No

< : the new part can be substituted for the current.

> : the current part can be substituted for the new.

S : Interchangeable as a set.

