

Combination Hammer and Rotary Hammer with Dust collection system series



photo: HR008G+DX10

Powered	Model	Dust collection system	Capacity
40V max	HR008G	DX10	30mm
	HR009G	DX11	
	HR001G/ HR003G	DX12	28mm
	HR002G/ HR004G	DX14	
	HR007G	DX15	
18V x2	HR010G	DX16	20mm
	DHR280/ DHR282	DX08	28mm
	DHR281/ DHR283	DX09	
18V	DHR242	DX06	24mm
	DHR243	DX07	18mm
	DHR183	DX16	
AC	HR3011FC	DX10	30mm
	HR3012FC	DX11	
	HR2652/ HR2653	DX15	26mm
	HR2653T/ HR2663		

Accessories

Dust collection system

DX16

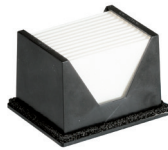


Sealing cap
5 pcs/set

Dust case set

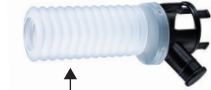


HEPA Filter set



Dust cup set

For drilling



Bellows B

For chipping / chiseling



Simply by replacing the drilling bellows with Bellows B



Tool hanger set



Wireless unit (WUT01)

HR010G only



Wireless unit adaptor (WUT02)

HR010G only



Charging Time

HR010G

	Fast Charging	
	DC40RA	DC40RC
*1 BL4020 2.0Ah	22 min	30 min
*1 BL4025 2.5Ah	28 min	38 min
*1 BL4040 4.0Ah	45 min	67 min
BL4050F 5.0Ah	50 min	85 min
BL4080F 8.0Ah	76 min	170 min

*1 Recommended battery

DHR183

	Fast Charging	
	DC18RC	DC18SD
BL1815N 1.5Ah	15 min	30 min
BL1820B 2.0Ah	24 min	45 min
BL1830B 3.0Ah	22 min	60 min
BL1840B 4.0Ah	36 min	90 min
BL1850B 5.0Ah	45 min	110 min
BL1860B 6.0Ah	55 min	130 min

Cordless Combination Hammer	HR010G 20 mm (13/16") Adapted for SDS-PLUS bits
Cordless Rotary Hammer	DHR183 18 mm (11/16") Adapted for SDS-PLUS bits

	HR010G	DHR183
Variable Speed	Yes	Yes
Brake	Yes	Yes
Reversing	Yes	Yes
Anti-restart function	Yes	Yes
Torque Limiter	Yes	Yes
Constant Speed	Yes	Yes
Dust Collection	Yes	Yes
Built-in Job Light	Yes	Yes
Adapted for SDS-PLUS bits	Yes	Yes
Carrying Case	Yes	Yes
Impact energy	EPTA-Procedure 05/2009: 2.1 J	EPTA-Procedure 05/2009: 1.7 J
Capacity	Concrete (w/ TCT bit): 20 mm (13/16") Steel: 13 mm (1/2") Wood: 26 mm (1") Core bit: 35 mm (1-3/8") Diamond core bit: 32 mm (1-1/4")	Concrete: 18 mm (11/16") Steel: 13 mm (1/2") Wood: 24 mm (15/16")
Blows per minute (BPM)	0 - 5,000	0 - 5,000
No load speed (RPM)	0 - 1,350	0 - 1,100
Sound pressure level	90 dB(A)	90 dB(A)
Sound power level	101 dB(A)	101 dB(A)
Vibration level	Hammer drilling into concrete: 10.0 m/s ²	Hammer drilling into concrete: 7.5 m/s ²
Dimensions (L x W x H)	w/ BL4020 / BL4025: 289 x 93 x 217 mm (11-3/8 x 3-5/8 x 8-1/2")	w/ BL1830B / BL1840B / BL1850B / BL1860B: 288 x 89 x 215 mm (11-3/8 x 3-1/2 x 8-1/2")
Net weight	2.8 - 4.5 kg (6.2 - 9.9 lbs.)	2.1 - 2.9 kg (4.6 - 6.4 lbs.)

Standard Equipment : Dust cup (country-specific) (DHR183 only), Side grip, Depth gauge, Battery, Charger

The weight may differ depending on the attachment(s), including the battery cartridge. The lightest and heaviest combination, according to EPTA-Procedure 01/2014, are shown in the table. Items of standard equipment and specifications may vary by country or area.

Makita Corporation

3-11-8 Sumiyoshi-cho, Anjo, Aichi, 446-8502 Japan

PRINTED IN JAPAN 202308



Cordless Combination Hammer

HR010G 20 mm (13/16")

Cordless Rotary Hammer

DHR183 18 mm (11/16")

Dust collection system
DX16

Satisfy Professional's Needs



Adapted for
SDS-PLUS bits



Cordless Combination Hammer (3 mode)

HR010G

Capacity
Concrete: 20 mm



Cordless Rotary Hammer (2 mode)

DHR183

Capacity
Concrete: 18 mm



Dust collection system

DX16 (option)

Max bit Capacity
Dia. 20mm
Length 165mm



HEPA filter



HR010G only

HR010G / DHR183



Compact and lightweight design



photo: HR010G

Dust collection system DX16 (option)

Compact and lightweight design

Max. attachable bit size

Diameter: 20mm
Length: 165mm
Effective length: 105mm



Dimensions(L x W x H)

Tool body with Side grip

HR010G + DX16
Battery: BL4025
422 x 136 x 217 mm

DHR183 + DX16
Battery: BL1860B
416 x 134 x 215 mm



Lightweight

HR010G battery: BL4025	DHR183 battery: BL1860B
3.6 kg	3.2 kg
Tool body with Side grip	

Filter cleaning mechanism



One-touch easy attachment/removal



HEPA filter

Equipped with HEPA Filter

having a high particle capture rate, which is also used for home appliance vacuum cleaners.



AVT Anti-Vibration Technology

Low vibration

HR010G: **10.0 m/s²**
DHR183: **7.5 m/s²**

Measuring point: at Side grip

- Test conditions
- Downward drilling, Depth: 80mm
 - Drill diameter: ø10.0mm
 - Concrete compressive strength: 40N/mm² (According to IEC62841-2-6.)

3 operation modes

HR010G only



AWS HR010G only

Auto-start Wireless System

connects to compatible vacuum cleaner with Bluetooth. The vacuum cleaner automatically runs while the switch is on.



XPT eXtreme Protection Technology



LED joblight

