



TH	THAILAND
----	----------

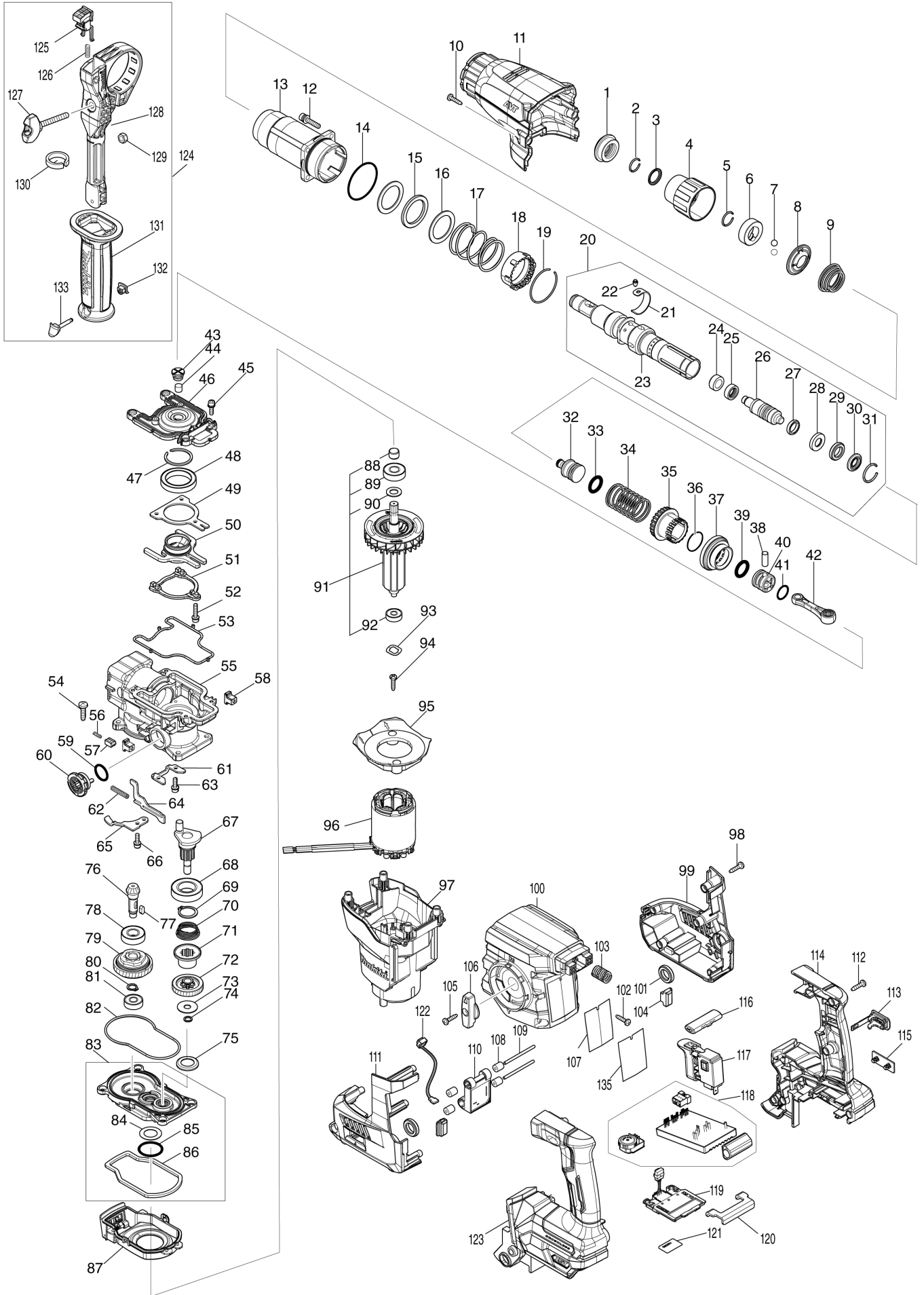
Diagram / Parts List

HR008G

30MM CRDLS COMBINATION HAMMER



(TH) HR008G / 30MM CRDLS COMBINATION HAMMER



TH	THAILAND
----	----------

HR008G / 30MM CRDLS COMBINATION HAMMER

Item	Sub	Parts No.	Parts Description	Qty	I/C	E/C No.	Close No.	Remark
001		286288-8	CAP 35	1				
002		233989-9	RING SPRING 14	1				
003		346834-0	WASHER 16	1				
004		459685-3	CHUCK COVER	1				
005		233992-0	RING SPRING 15	1				
006		327269-4	RING 17	1				
007		216022-2	STEEL BALL 7.0	2				
008		347944-6	GUIDE WASHER	1				
009		232503-8	CONICAL COMP. SPRING 21-34	1				
010		266326-2	TAPPING SCREW 4X18	2				
011		459167-5	BARREL COVER	1				
012		266793-1	HEX. S.H.B. M5X25 WITH WR	4				
013		140J35-0	BARREL COMPLETE	1				
	C10	213636-8	OIL SEAL 25	1				
014		213620-3	O RING 46	1				
015		422493-5	RUBBER RING 31	1				
016		267354-0	FLAT WASHER 31	2				
017		232496-9	COMPRESSION SPRING 37	1				
018		419986-1	LOCK SLEEVE	1				
019		233952-2	RING SPRING 41	1				
020		136312-6	TOOL HOLDER ASS'Y	1				
	D10		INC. 21-31					
021		347501-0	LEAF SPRING	1				
022		256598-7	SHOULDER PIN 4	1				
023		327277-5	TOOL HOLDER	1				
024		327515-5	SLEEVE 11	1				
025		327516-3	RING 11	1				
026		140S89-1	IMPACT BOLT A COMPLETE	1				
027		213880-7	SEAL RING 12	1				
028		327268-6	RING 11	1				
029		424267-0	CUSHION RING 12	1				
030		327271-7	WASHER 11	1				
031		231987-7	RING SPRING 21	1				
032		327266-0	STRIKER	1				
033		213881-5	O RING 16	1				
034		232497-7	COMPRESSION SPRING 27	1				
035		327276-7	DRIVING SLEEVE	1				
036		232501-2	RING SPRING 24	1				
037		226868-8	SPIRAL BEVEL GEAR 31	1				
038		268122-4	PIN 7	1				
039		213881-5	O RING 16	1				
040		319807-6	PISTON	1				
041		213226-7	O RING 16	1				
042		140J36-8	CONNECTING ROD COMPLETE	1				
043		459180-3	FILTER CAP	1				
044		443153-6	FELT	1				
045		922123-3	HEX. SOCKET HEAD BOLT M4X14	4				
046		319802-6	CRANK CAP	1				
047		961140-8	RETAINING RING	1				
048		211423-9	BALL BEARING 6806DDW	1				
049		347500-2	BEARING RETAINER B	1				
050		140J31-8	COUNTER WEIGHT COMPLETE	1				
051		310927-9	WEIGHT RETAINER	1				
052		266948-8	HEX S. H. BOLT M4X20 WITH WR	3				
053		459182-9	SEAL RING B	1				
054		266021-4	TAPPING SCREW 5X20	4				
055		140J33-4	CRANK HOUSING COMPLETE	1				
056		232499-3	COMPRESSION SPRING 2	1				
057		310929-5	PUSH CORN	1				
058		455165-7	FIX GUIDE	2				
059		213262-3	O RING 18	1				
060		459175-6	LINK LEVER	1				
061		347497-5	BEARING RETAINER A	1				
062		234019-9	COMPRESSION SPRING 4	1				
063		922123-3	HEX. SOCKET HEAD BOLT M4X14	2				

A:HR008GZ(N)
B:HR008GM201(H)

Interchange
O : Yes
X : No
< : the new part can be substituted for the current.
> : the current part can be substituted for the new.
S : Interchangeable as a set.

TH	THAILAND
----	----------

HR008G / 30MM CRDLS COMBINATION HAMMER

Item	Sub	Parts No.	Parts Description	Qty	I/C	E/C No.	Close No.	Remark
064		345814-3	LINK PLATE	1				
065		347498-3	GUIDE PLATE	1				
066		922123-3	HEX. SOCKET HEAD BOLT M4X14	1				
067		140M22-7	CRANK SHAFT COMPLETE	1				
068		211323-3	BALL BEARING 6904LLU	1				
069		961060-6	RETAINING RING S-20	1				
070		232498-5	CONICAL COMP. SPRING 21-26	1				
071		327273-3	CLUTCH	1				
072		226869-6	HELICAL GEAR 31	1				
073		267353-2	FLAT WASHER 8	1				
074		961034-7	RETAINING RING	1				
075		345818-5	CUP WASHER 16	1				
076		226867-0	SPIRAL BEVEL GEAR 8	1				
077		254239-9	KEY 4	1				
078		211131-2	BALL BEARING 6001DDW	1				
079		125386-2	TORQUE LIMITER ASS'Y	1				
080		961006-2	RETAINING RING S-10	1				
081		210005-4	BALL BEARING 608DDW	1				
082		459181-1	SEAL RING A	1				
083		136330-4	GEAR HOUSING ASS'Y	1				
	D10		INC. 84-86					
084		253749-3	FLAT WASHER 16	1				
085		213445-5	O-RING 26	1				
086		459183-7	SPONGE SHEET	1				
087		140J32-6	AIR DUCT COMPLETE	1				
088		331775-3	SLEEVE 10	1				
089		211097-6	BALL BEARING 6000LLB	1				
090		253828-7	FLAT WASHER 10	1				
091		519722-6	ROTOR ASS'Y	1				
	D10		INC. 88-90,92					
092		210022-4	BALL BEARING 626DDW	1				
093		253555-6	WAVE WASHER 12	1				
094		266326-2	TAPPING SCREW 4X18	2				
095		413F13-2	BAFFLE PLATE	1				
096		629A96-4	STATOR	1				
097		141H81-4	MOTOR HOUSING COMPLETE	1				
	C10	263027-3	RUBBER PIN 4	1				
098		266326-2	TAPPING SCREW 4X18	5				
099		183V77-3	HOUSING SET	1				
	D10		INC. 111					
100		413F12-4	HANDLE BASE	1				
101		459184-5	CUSHION RING 12	2				
102		266326-2	TAPPING SCREW 4X18	4				
103		232500-4	COMPRESSION SPRING 10	1				
104		422863-8	BATTERY CUSHION	2				
105		266326-2	TAPPING SCREW 4X18	1				
106		459174-8	CHANGE LEVER	1				
107		8119V9-3	HR008G NAME PLATE	1				
108		422472-3	SPONGE SLEEVE 3	4				
109		256886-2	ROD 3	2				
110		620J19-9	ACCELEROMETER CIRCUIT	1				
111		183V77-3	HOUSING SET	1				
	D10		INC. 99					
112		266326-2	TAPPING SCREW 4X18	6				
113		140G30-2	CAP COMPLETE	1				
	C10	213A05-9	O-RING16	1				
114		183V96-9	HANDLE SET	1				
	C10	263005-3	RUBBER PIN 6	2				
	C20	8005T5-8	XGT LOGO LABEL	1				
	D10		INC. 123					
115		459753-2	CAP	1				
116		453124-5	F/R CHANGE LEVER	1				
117		651439-6	SWITCH C3JR-4B-2	1				
118		620J18-1	CONTROLLER	1				
119		632P65-6	TERMINAL UNIT	1				

A:HR008GZ(N)
B:HR008GM201(H)

Interchange
O : Yes
X : No
< : the new part can be substituted for the current.
> : the current part can be substituted for the new.
S : Interchangeable as a set.

