



TH	THAILAND
----	----------

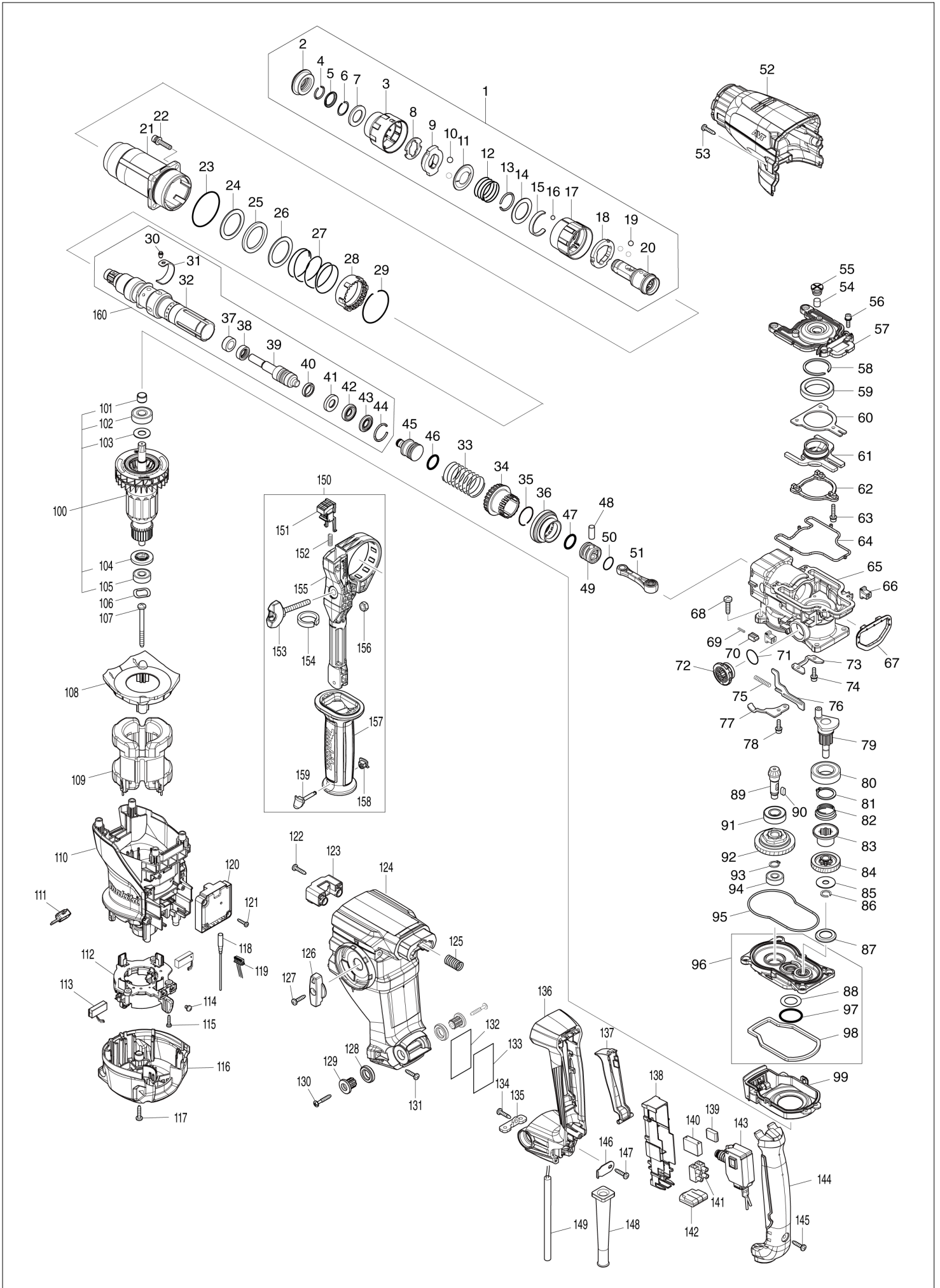
Diagram / Parts List

HR3012FC

30MM COMBINATION HAMMER



(TH) HR3012FC / 30MM COMBINATION HAMMER



TH	THAILAND
----	----------

HR3012FC / 30MM COMBINATION HAMMER

Item	Sub	Parts No.	Parts Description	Qty	I/C	E/C No.	Close No.	Remark
001		127219-7	TOOL HOLDER ASSEMBLY	1				
	D10		INC. 2-20					
002		422570-3	CAP 35	1				
003		459162-5	CHUCK COVER	1				
004		233989-9	RING SPRING 14	1				
005		346221-3	WASHER 16	1			DV168	
005-1		346834-0	WASHER 16	1	O	DV168		
006		233992-0	RING SPRING 15	1				
007		253467-3	WASHER 17	1				
008		347687-0	PLATE	1				
009		310926-1	STOPPER	1				
010		216022-2	STEEL BALL 7.0	2				
011		347745-2	GUIDE WASHER	1				
012		232554-1	COMPRESSION SPRING 26	1				
013		233924-7	RING SPRING 21	1				
014		253468-1	FLAT WASHER 24	1				
015		232555-9	LEAF SPRING	1				
016		216018-3	STEEL BALL 5.0	1				
017		459159-4	CHANGE COVER A	1				
018		347496-7	CHANGE RING A	1				
019		216013-3	STEEL BALL 6	3				
020		327264-4	TOOL HOLDER	1				
021		140J35-0	BARREL COMPLETE	1				
	C10	213636-8	OIL SEAL 25	1				
022		266793-1	HEX. S.H.B. M5X25 WITH WR	4				
023		213620-3	O RING 46	1				
024		267354-0	FLAT WASHER 31	1				
025		422493-5	RUBBER RING 31	1				
026		267354-0	FLAT WASHER 31	1				
027		232496-9	COMPRESSION SPRING 37	1				
028		419986-1	LOCK SLEEVE	1				
029		233952-2	RING SPRING 41	1				
030		256598-7	SHOULDER PIN 4	1				
031		347501-0	LEAF SPRING	1				
032		327272-5	TOOL HOLDER GUIDE	1				
033		232497-7	COMPRESSION SPRING 27	1				
034		327276-7	DRIVING SLEEVE	1				
035		232501-2	RING SPRING 24	1				
036		226868-8	SPIRAL BEVEL GEAR 31	1				
037		327515-5	SLEEVE 11	1				
038		327516-3	RING 11	1				
039		140S90-6	IMPACT BOLT B COMPLETE	1				
040		213880-7	SEAL RING 12	1				
041		327268-6	RING 11	1				
042		424267-0	CUSHION RING 12	1				
043		327271-7	WASHER 11	1				
044		231987-7	RING SPRING 21	1				
045		327266-0	STRIKER	1				
046		213881-5	O RING 16	1				
047		213881-5	O RING 16	1				
048		268122-4	PIN 7	1				
049		319807-6	PISTON	1				
050		213226-7	O RING 16	1				
051		140J36-8	CONNECTING ROD COMPLETE	1				
052		459167-5	BARREL COVER	1				
053		266326-2	TAPPING SCREW 4X18	2				
054		443153-6	FELT	1				
055		459180-3	FILTER CAP	1				
056		922123-3	HEX. SOCKET HEAD BOLT M4X14	4				
057		319802-6	CRANK CAP	1				
058		961140-8	RETAINING RING	1				
059		211423-9	BALL BEARING 6806DDW	1				
060		347500-2	BEARING RETAINER B	1				
061		140J31-8	COUNTER WEIGHT COMPLETE	1				
062		310927-9	WEIGHT RETAINER	1				

A:HR3012FCJ(H)

Interchange

O : Yes

X : No

< : the new part can be substituted for the current.

> : the current part can be substituted for the new.

S : Interchangeable as a set.

TH	THAILAND
----	----------

HR3012FC / 30MM COMBINATION HAMMER

Item	Sub	Parts No.	Parts Description	Qty	I/C	E/C No.	Close No.	Remark
063		266948-8	HEX S. H. BOLT M4X20 WITH WR	3				
064		459182-9	SEAL RING B	1				
065		140J33-4	CRANK HOUSING COMPLETE	1				
066		455165-7	FIX GUIDE	2				
067		422492-7	CUSHION	1				
068		266420-0	TAPPING SCREW 5X20	4			D8490	
068-1		266021-4	TAPPING SCREW 5X20	4	<	D8490		
069		232499-3	COMPRESSION SPRING 2	1				
070		310929-5	PUSH CORN	1				
071		213262-3	O RING 18	1				
072		459175-6	LINK LEVER	1				
073		347497-5	BEARING RETAINER A	1				
074		922123-3	HEX. SOCKET HEAD BOLT M4X14	2				
075		234019-9	COMPRESSION SPRING 4	1				
076		345814-3	LINK PLATE	1				
077		347498-3	GUIDE PLATE	1				
078		922123-3	HEX. SOCKET HEAD BOLT M4X14	1				
079		140M22-7	CRANK SHAFT COMPLETE	1				
080		211323-3	BALL BEARING 6904LLU	1				
081		961060-6	RETAINING RING S-20	1				
082		232498-5	CONICAL COMP. SPRING 21-26	1				
083		327273-3	CLUTCH	1				
084		226869-6	HELICAL GEAR 31	1				
085		267353-2	FLAT WASHER 8	1				
086		961034-7	RETAINING RING	1				
087		345818-5	CUP WASHER 16	1				
088		253749-3	FLAT WASHER 16	1				
089		226867-0	SPIRAL BEVEL GEAR 8	1				
090		254239-9	KEY 4	1				
091		211131-2	BALL BEARING 6001DDW	1				
092		125386-2	TORQUE LIMITER ASS'Y	1				
093		961006-2	RETAINING RING S-10	1				
094		210005-4	BALL BEARING 608DDW	1				
095		459181-1	SEAL RING A	1				
096		136330-4	GEAR HOUSING ASS'Y	1				
	D10		INC. 88,97,98					
097		213445-5	O-RING 26	1				
098		459183-7	SPONGE SHEET	1				
099		140J32-6	AIR DUCT COMPLETE	1				
100		515448-8	ARMATURE ASS'Y 220-240V	1				
	D10		INC. 101-105					
101		331775-3	SLEEVE 10	1				
102		211097-6	BALL BEARING 6000LLB	1				
103		253171-4	FLAT WASHER 10	1				
104		681644-1	INSULATION WASHER	1				
105		210005-4	BALL BEARING 608DDW	1				
106		267804-5	WAVE WASHER 15	1				
107		266329-6	TAPPING SCREW 5X60	2				
108		459172-2	BAFFLE PLATE	1				
109		621898-8	FIELD	1				
110		459158-6	MOTOR HOUSING	1				
111		620C43-0	LED CIRCUIT	1				
112		632N59-9	BRUSH HOLDER UNIT	1				
113		B-80329	CARBON BRUSH SET CB-153A	1			Y08937	
113-1		197244-2	CARBON BRUSH CB-351	1	X	Y08937		
114		652044-2	+BIND SCREW M3.5X5.0	2				
115		266404-8	TAPPING SCREW BIND 3X14	3				
116		459169-1	REAR COVER	1				
117		266326-2	TAPPING SCREW 4X18	4				
118		632P88-4	LEAD UNIT	1				
119		632P89-2	LEAD UNIT	1				
120		620C41-4	CONTROLLER	1				
121		266404-8	TAPPING SCREW BIND 3X14	2				
122		266326-2	TAPPING SCREW 4X18	2				
123		140M21-9	HANDLE STOPPER COMPLETE	1				

A:HR3012FCJ(H)

Interchange
 O : Yes
 X : No
 < : the new part can be substituted for the current.
 > : the current part can be substituted for the new.
 S : Interchangeable as a set.

