



# Angle Grinder GA5080 / GA5080R 125 mm (5")



## Just One Click



Pull & Release

## X-LOCK

Quick and Easy Wheel Change System

Snap-in in a second



Continuous Rating Input

**1,400 w**

GA5080R:

**with Anti-restart function**

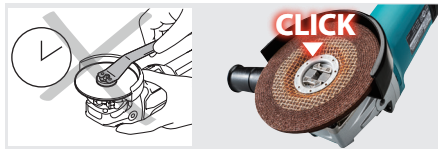


# Quick and easy wheel change

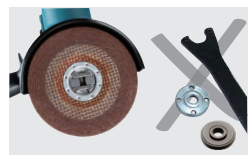
## XLOCK



**Just one click to attach the accessories**  
easy removal just simply pull the lever



**No downtime**  
of installing and removing the accessories.  
Improve your work efficiency and work environment



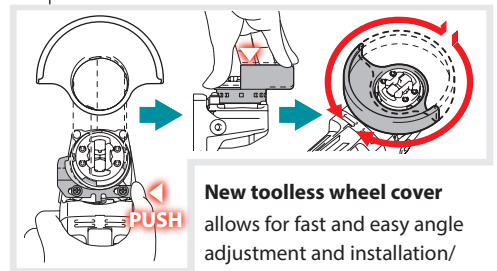
**No tool required**  
X-LOCK mechanism ensures that the accessory is properly mounted to the tool even without nut, flange, and spanner.



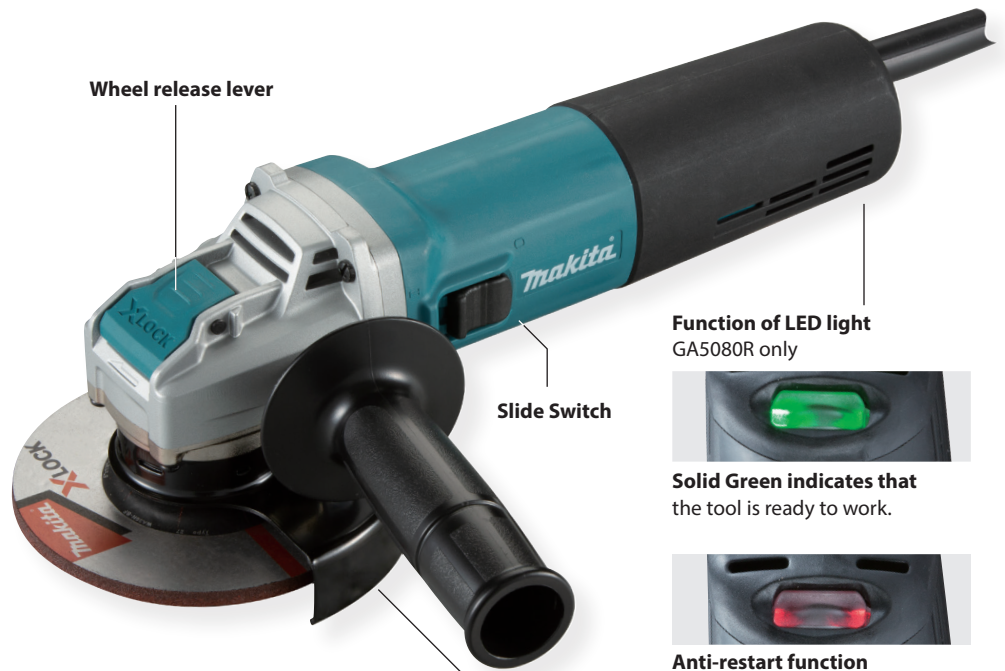
**No over-tightening**  
X-LOCK accessories are firmly attached and cannot be mounted incorrectly.



**No scratching workpiece**  
by nuts even when flat grinding.



**New toolless wheel cover**  
allows for fast and easy angle adjustment and installation/removal of wheel cover.



**Function of LED light**  
GA5080R only



**Solid Green indicates that**  
the tool is ready to work.



**Anti-restart function**  
prevents accidental startup  
Even if plugged in with the switch "ON", the tool does not start with a blinking red light for visual warning.

## Accessories

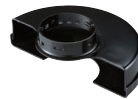
### Dust Collection wheel guard

for Diamond wheel  
Part No. 191G05-4



### Wheel cover

for abrasive cut-off wheel  
Part No. 162708-5  
Part No. 140U29-1(for US)



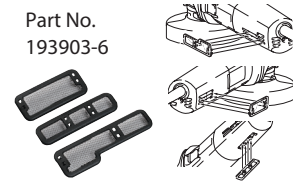
### Anti-vibration grip

Part No. 194514-0



### Dust cover attachment set

Part No. 193903-6



### 125mm X-LOCK wheels

125mm X-LOCK accessories are compatible with conventional angle grinders.

### Grinding wheel / Metal

Part No. E-00393(EN)



### Thin Cut-off wheel (Flat)

Part No. E-00418(EN)



### Grinding wheel / Stainless

Part No. E-00402(EN)



### Diamond wheel / concrete

Part No. E-02076



## Angle Grinder

### GA5080 / GA5080R 125 mm (5")

318

- Double Insulation
- Constant Speed
- Soft Start
- Dust Collection

#### Standard Equipment:

Depressed Center Wheel, Side Grip, Wheel Cover

<b>Continuous rating input</b>	1,400W
<b>Wheel Diameter/ Hole Diameter</b>	125 mm (5") / 22.3 mm (7/8")
<b>Max Cutting Depth</b>	31 mm (1-1/4")
<b>No Load Speed (RPM)</b>	12,000
<b>Vibration Level</b>	Surface Grinding w/ Normal Side Grip: 7.5m/s <sup>2</sup>
<b>Sound Pressure Level</b>	84dB(A)
<b>Sound Power Level</b>	95dB(A)
<b>Dimensions (L x W x H)</b>	309 x 141 x 113 mm (12-1/8 x 5-9/16 x 4-7/16")
<b>Net weight</b>	2.5 - 3.6 kg (5.5 - 7.9 lbs.)
<b>Power supply cord</b>	2.5 m (8.2 ft)

The weight may differ depending on the attachment(s), including the battery cartridge.

The lightest and heaviest combination, according to EPTA-Procedure 01/2014, are shown in the table.

Items of standard equipment and specifications may vary by country or area.

## Makita Corporation

3-11-8 Sumiyoshi-cho, Anjo, Aichi, 446-8502 Japan

PRINTED IN JAPAN 202103