



TH	THAILAND
----	----------

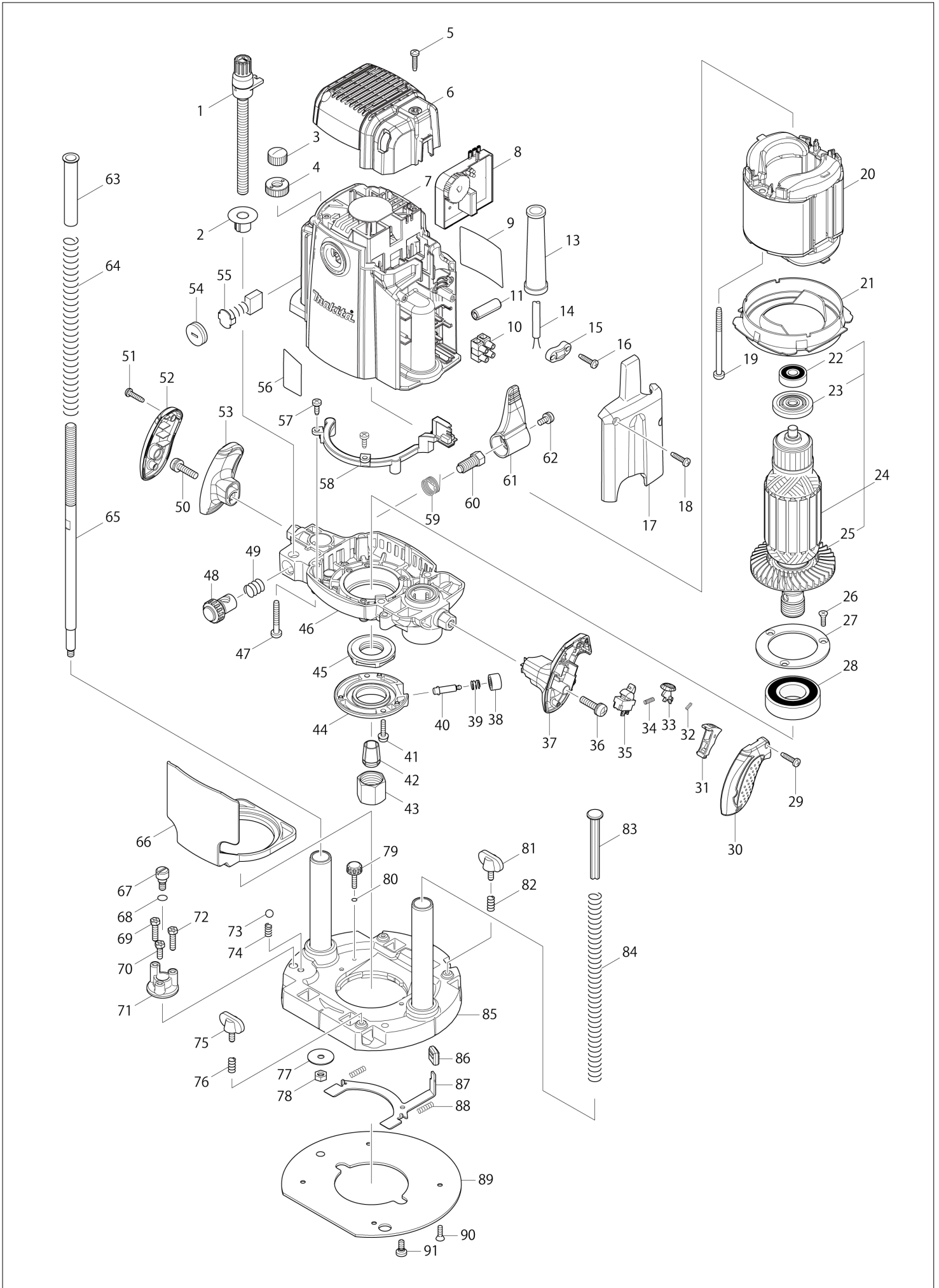
# Diagram / Parts List

**RP2302FC**

**ROUTER**



(TH) RP2302FC / ROUTER



TH	THAILAND
----	----------

### RP2302FC / ROUTER

Item	Sub	Parts No.	Parts Description	Qty	I/C	E/C No.	Close No.	Remark
001		125542-4	THUMB SCREW M10X115 ASS'Y	1				
002		450946-4	DEPTH POINTER	1				
003		252643-6	WING NUT M10	1				
004		410129-8	NYLON NUT M10	1				
005		265995-6	TAPPING SCREW 4X18	2				
006		413B16-2	REAR COVER	1				
007		141F97-7	MOTOR HOUSING COMPLETE	1				
	C10	643707-1	BRUSH HOLDER	2				
	C20	816923-0	SCALE LABEL	1			DU063	
	C21	816923-0	SCALE LABEL	1	O	DU063		
008		620H06-6	CONTROLLER	1				
009		8113F5-3	RP2302FC NAME PLATE	1				
010		654531-7	TERMINAL BLOCK 2P	1				
013		682505-8	CORD GUARD 10-90	1				
014		691216-4	POWER SUPPLY CORD 1.25-2-2.5	1			DU617	
014-1		692171-3	POWER SUPPLY CORD 1.5-2-2.5	1	S	DU617		
015		687054-0	STRAIN RELIEF	1			DU617	
015-1		687063-9	CORD CLAMP	1	S	DU617		
016		265995-6	TAPPING SCREW 4X18	2				
017		450949-8	COVER	1				
018		265995-6	TAPPING SCREW 4X18	2				
019		266059-9	TAPPING SCREW 5X75	2				
020		636343-0	FIELD 220V	1				
021		450944-8	BUFFLE PLATE	1			DV964	
021-1		4131R0-7	BAFFLE PLATE	1	<	DV964		
022		211092-6	BALL BEARING 629DDW	1				
023		681631-0	INSULATION WASHER	1				
024		517808-0	ARMATURE ASS'Y 220-240V	1				
	D10		INC. 22,23,25					
025		240112-9	FAN 80	1				
026		251295-0	+ COUNTERSUNK HEAD SCREW M4X1	3				
027		285731-4	BEARING RETAINER 60	1				
028		211380-1	BALL BEARING 6205DDW	1				
029		265995-6	TAPPING SCREW 4X18	2				
030		450937-5	GRIP COVER R	1				
031		450940-6	SWITCH LEVER	1				
032		233024-3	COMPRESSION SPRING 4	1				
033		450941-4	LOCK OFF BUTTON	1				
034		231372-4	COMPRESSION SPRING 5	1				
035		651432-0	SWITCH	1				
036		911343-4	PAN HEAD SCREW M6X25	1				
037		450936-7	GRIP R	1				
038		450942-2	PUSH BUTTON	1				
039		233072-2	COMPRESSION SPRING 8	1				
040		268234-3	COLLARED PIN 6	1				
041		911133-5	PAN HEAD SCREW M4X18	2				
042		763622-4	COLLET CONE 1/2"	1				
043		763674-5	COLLET NUT	1				
044		318382-9	RETAINER COVER	1				
045		285849-1	RETAINER	1				
046		158972-4	MOTOR BRACKET COMPLETE	1				
047		266012-5	TAPPING SCREW 5X35	4				
048		153476-1	HALF NUT COMPLETE	1				
049		231231-2	COMPRESSION SPRING 12	1				
050		911343-4	PAN HEAD SCREW M6X25	1				
051		265995-6	TAPPING SCREW 4X18	2				
052		450939-1	GRIP COVER L	1				
053		450938-3	GRIP L	1				
054		643700-5	BRUSH HOLDER CAP 7-18	2				
055		B-80341	CARBON BRUSH SET CB-203A	1				
056		8119E8-6	INDICATION LABEL	1				
057		266026-4	TAPPING SCREW BIND CT 4X12	2				
058		631862-1	LED CIRCUIT	1				
059		233538-2	TORSION SPRING 15	1				
060-1		265C75-6	SET BOLT M10	1				

A:RP2302FC05(H)

Interchange  
O : Yes  
X : No  
< : the new part can be substituted for the current.  
> : the current part can be substituted for the new.  
S : Interchangeable as a set.

