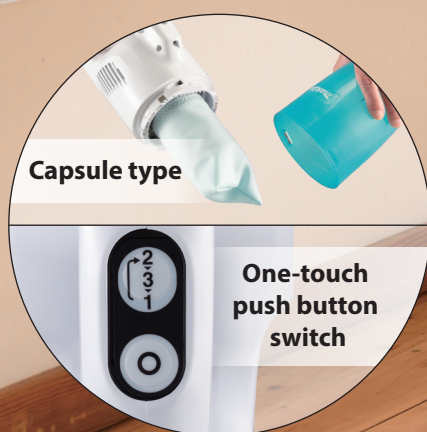




Cordless Cleaner CL117FD

3 color capsule selection



2.0Ah built-in type
Li-Ion battery



Run time
55 min
[Normal mode]

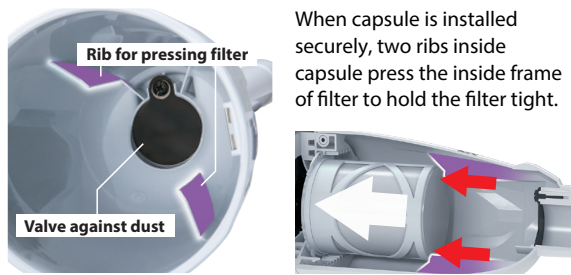
Charging time
2.0 h

Max Sealed Suction
5.0 kPa

Max Air Flow
1.0 m³/min

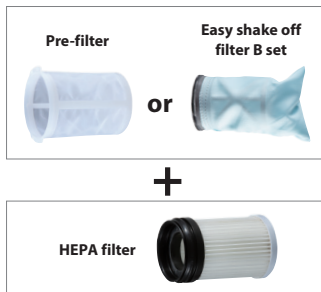
12Vmax / 2.0Ah built-in type Li-Ion battery

Improved dust-resistance

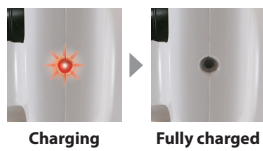


HEPA filter is available

HEPA filter



Dual-function indicator lamp



Indicates that the battery is being charged.

Charging time
About **2.0h**



Warns of low battery capacity.

One-touch push button switch



3 Speed mode
2: High speed mode
3: Max speed mode
1: Normal speed mode

Single LED job light



Pipe locking mechanism



Pipe with beveled end



blue

3 colors capsule section

green

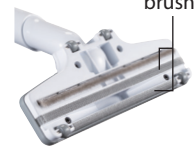
purple



Nozzle for flooring & carpet



Hair removing brush



Hair removing brush scrapes out and vacuums up hair/debris on carpet. Also available for wood floor.

Accessories

Floor/carpet t-nozzle
Part No. 198528-1



Floor t-nozzle
Part No. 123486-2



Nozzle assembly set
Part No. 191X06-4



Round brush set
Part No. 198878-4



Shelf brush set
Part No. 198873-4



Sash nozzle
Part No. 413770-6



Long sash nozzle set
Part No. 198919-6



Crevice nozzle 415 set
Part No. 199439-3



Pipe
Part No. 459353-8



Flexible hose set
Part No. 191E30-3



Flexible hose set
Part No. 198868-7



Straight pipe set 340
Part No. 191D76-3



Sash nozzle holder
Part No. 451242-3



Nozzle holder
Part No. 459354-6



Filter set
10pcs /set
Part No. 198915-4



Pre-filter
Part No. 198750-0



Easy shake off filter B set
Part No. 199966-0



Filter H set
Part No. 199989-8
HEPA filter



Cyclone attachment set with pipe lock
Part No. 191D71-3



Holder set
Part No. 199971-7



Cordless Cleaner

CL117FD

- Electronic 3-Speed
- Built-in Job Light

Capacity	650 mL
Continuous Use (min.)	Powerful / High / Normal: 10 / 18 / 55
Max air flow	1.0 m ³ /min
Max sealed suction	5.0 kPa (510 mmHg)
Suction Power	Powerful / High / Normal: 29 / 15 / 3
Dimensions (L x W x H)	w/o Pipe & Nozzle: 457 x 110 x 136 mm (18 x 4-5/16 x 5-3/8")
	w/ Pipe & Nozzle: 992 x 110 x 136 mm (39 x 4-5/16 x 5-3/8")
Net weight	1.0 kg (2.2 lbs.)

Standard Equipment: Floor nozzle, Sash nozzle, Sash nozzle holder, Pipe, Charger

Not covered by EPTA-Procedure
Items of standard equipment and specifications may vary by country or area.

Makita Corporation

3-11-8 Sumiyoshi-cho, Anjo, Aichi, 446-8502 Japan

PRINTED IN JAPAN 202206