



Cordless Hedge Trimmer

DUH506 500 mm (19-3/4")
DUH606 600 mm (23-5/8")

Satisfy Professional's Needs



Run time*
DUH506/DUH606
75/70 min
Battery: BL1860B

Strokes per minute
4,000 min⁻¹

Net weight
2.9 kg
Battery: BL1860B
Model: DUH506



*Continuous run time on a single full battery charge / No load continuous run time (approx)

Smooth and efficient trimming

- Equipped with BL motor to increase the number of strokes and output power for smooth and efficient trimming.
- Constant speed control suppresses rotation drop to enable stable mowing.



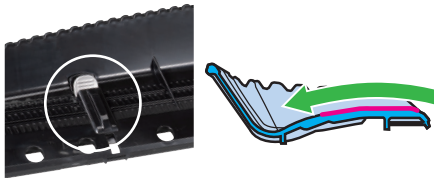
Lightweight design

The guide bar is made of aluminum to make the front of the tool lighter for reducing user fatigue.

New chip receiver (option)

can make it easier for user to collect leaf and twig debris, thanks to:

- Lower height of the connecting levers
- Reduced step height of the edge of the chip catching plate



Highly durable crank mechanism

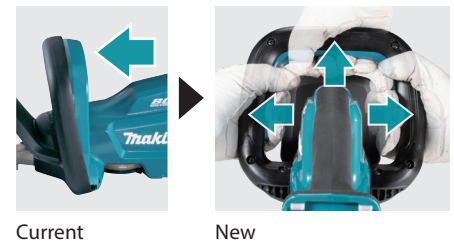
Increased crank wall thickness can:

- reduce the chance of falling off of the blade from the crank.
- increase the contact area between the crank and blade, reducing wear of the crank.



Redesigned switch lever easy-to-press

can be pressed without gripping the front handle deep in your palm, allowing for easy on/off control.



Accessories

Shear blade set

Blade cover

Chip receiver



Model No.	Shear blade set	Blade cover	Chip receiver
DUH506 (500mm)	1910H8-2	413L91-8	1910T1-0
DUH606 (600mm)	1910H9-0	413L92-6	1910T2-8

Charging Time

	Fast Charging	
	DC18RC	DC18SD
BL1815N 1.5Ah	15 min	30 min
BL1820B 2.0Ah	24 min	45 min
BL1830B 3.0Ah	22 min	60 min
BL1840B 4.0Ah	36 min	90 min
BL1850B 5.0Ah	45 min	110 min
BL1860B 6.0Ah	55 min	130 min

Cordless Hedge Trimmer

DUH506 / DUH606 500 mm (19-3/4") / 600 mm (23-5/8")

	DUH506	DUH606
Brake	500 mm (19-3/4")	600 mm (23-5/8")
Constant Speed	20.0 mm (13/16")	20.0 mm (13/16")
	4,000	4,000
Strokes Per Minute (SPM)	4,000	4,000
Continuous Use (min.)	w/ BL1860B: 75	w/ BL1860B: 70
Sound Pressure Level	77 dB(A)	79 dB(A)
Sound Power Level	88 dB(A)	90 dB(A)
Vibration Level	2.5 m/s ² or less	2.5 m/s ² or less
Dimensions (L x W x H)	897 x 207 x 185 mm (35-1/4 x 8-1/8 x 7-1/4")	1,016 x 207 x 185 mm (40 x 8-1/8 x 7-1/4")
Net weight	2.5 - 2.9 kg (5.5 - 6.4 lbs.)	2.7 - 3.0 kg (6.0 - 6.6 lbs.)

Standard Equipment : Blade Cover, Battery, Charger

The weight may differ depending on the attachment(s), including the battery cartridge. The lightest and heaviest combination, according to EPTA-Procedure 01/2014, are shown in the table. Items of standard equipment and specifications may vary by country or area.

Makita Corporation

3-11-8 Sumiyoshi-cho, Anjo, Aichi, 446-8502 Japan

PRINTED IN JAPAN 202210